



REPLACEMENT

SMALL BASKET
art.322201
Ø 44 mm
1.73 in

LARGE BASKET
art.322202
Ø 83 mm
3.27 in

DART BASKET
art.3225
Ø 34 mm
1.33 in

POLE TIP
art.3414

WINTER BASKET
art.3413
(for art.3410, art.3411 and art.3412)

2 min
100° C
(212° F)

glue colla

FOLDED POLES:

TOP MID SEGMENTS

LOW SEGMENTS

TOP MID AND LOW SEGMENTS

TELESCOPIC POLES (ALU FAST LOCK):

TELESCOPIC POLES (ROTATING LOCK):

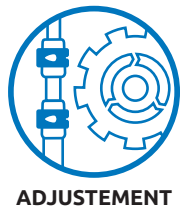


LEASH ADJUSTMENT



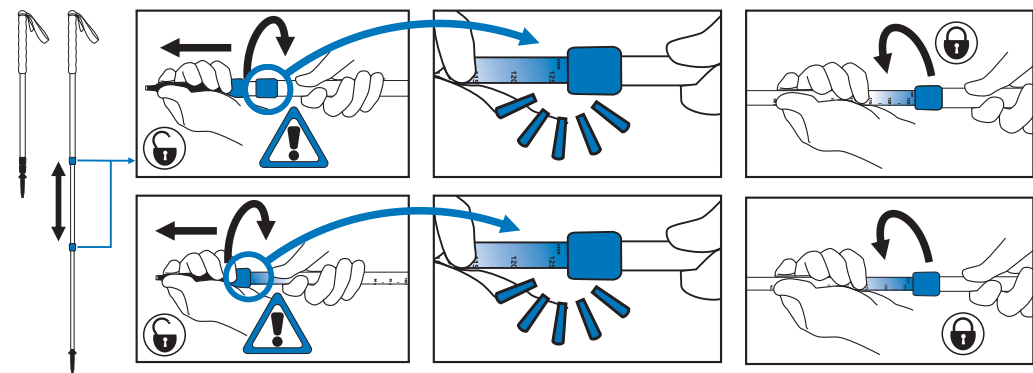
CARE

DRY BEFORE STORAGE

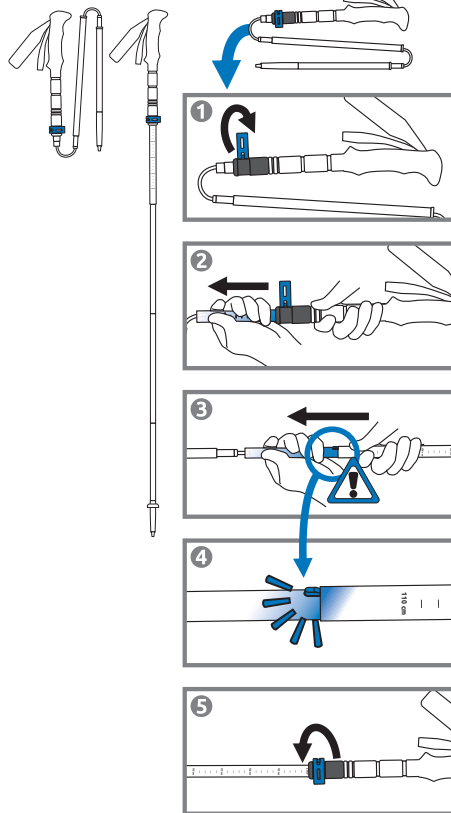


ADJUSTEMENT

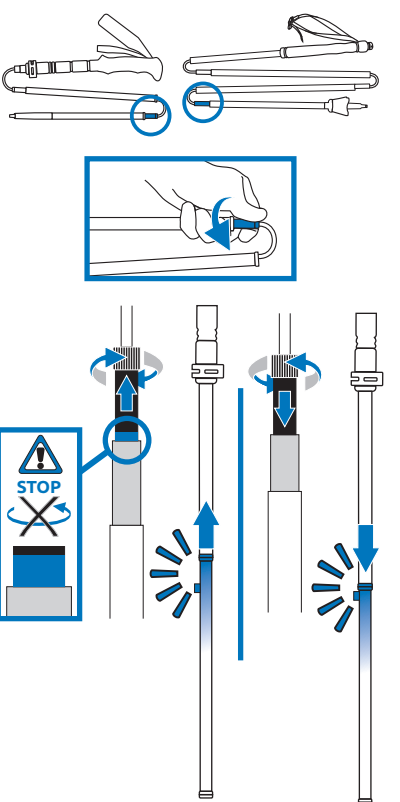
TELESCOPIC POLES (ROTATING LOCK):



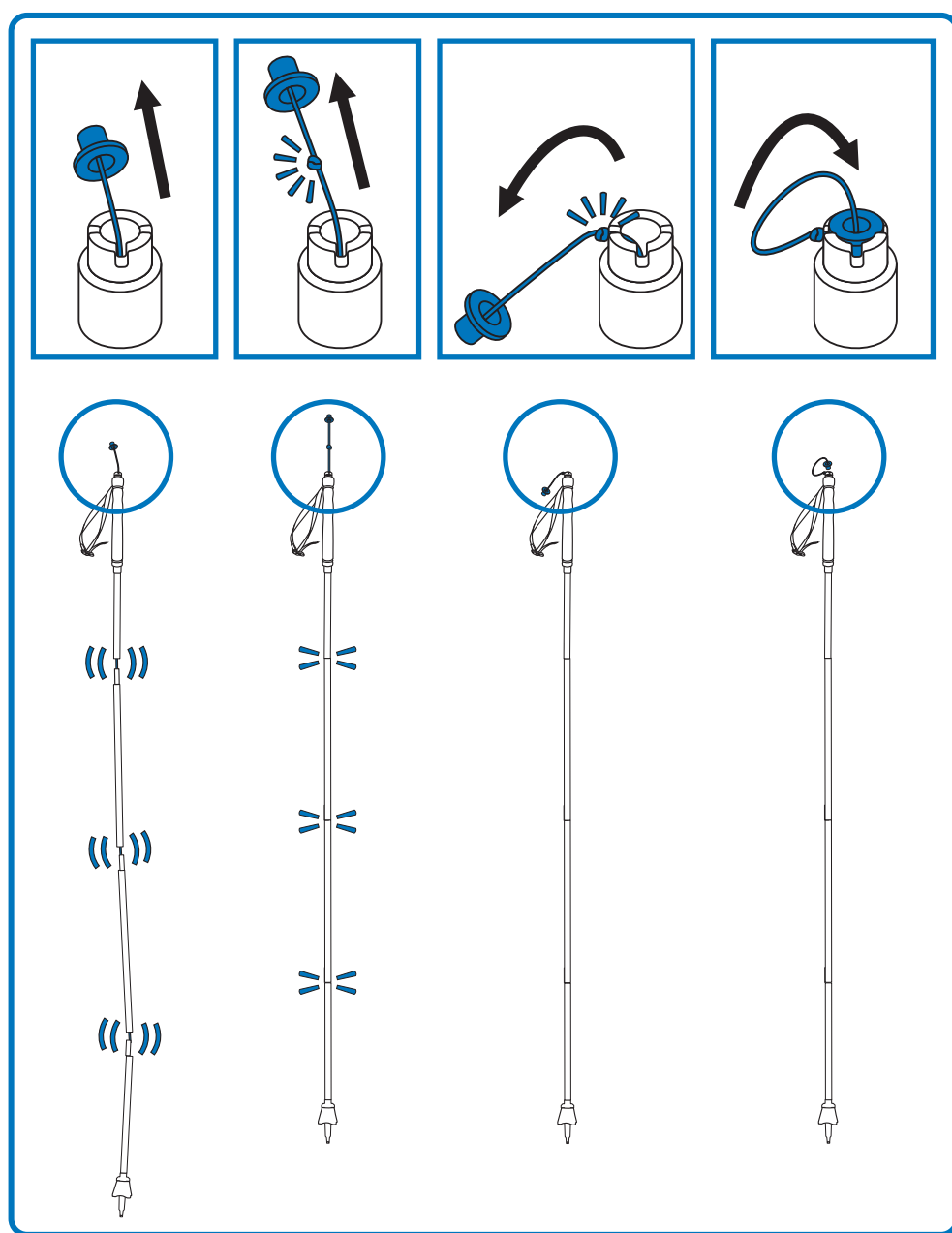
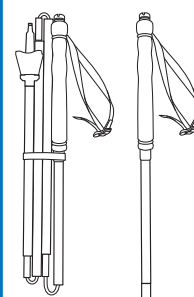
FOLDED POLES:



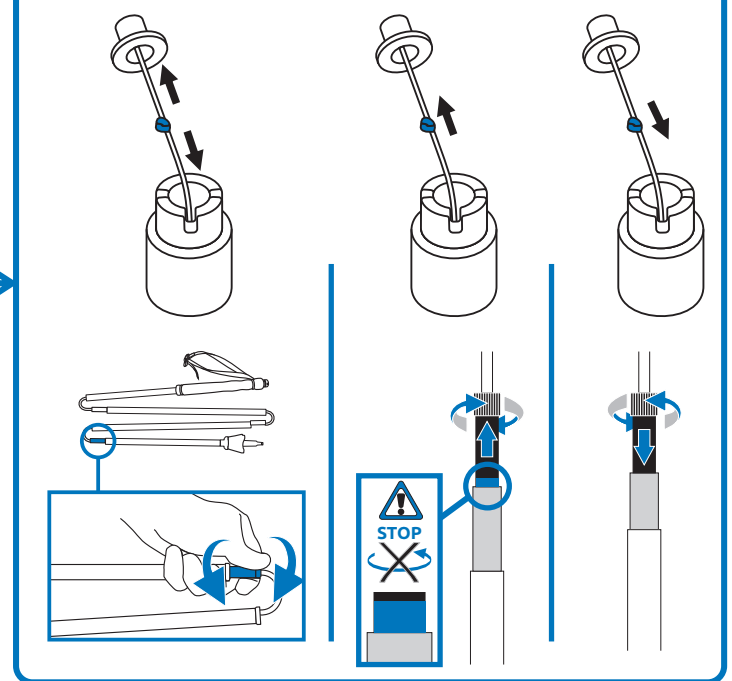
MICRO REGOLAZIONE • MICRO-ADJUSTMENT MICRO-AJUSTEMENT



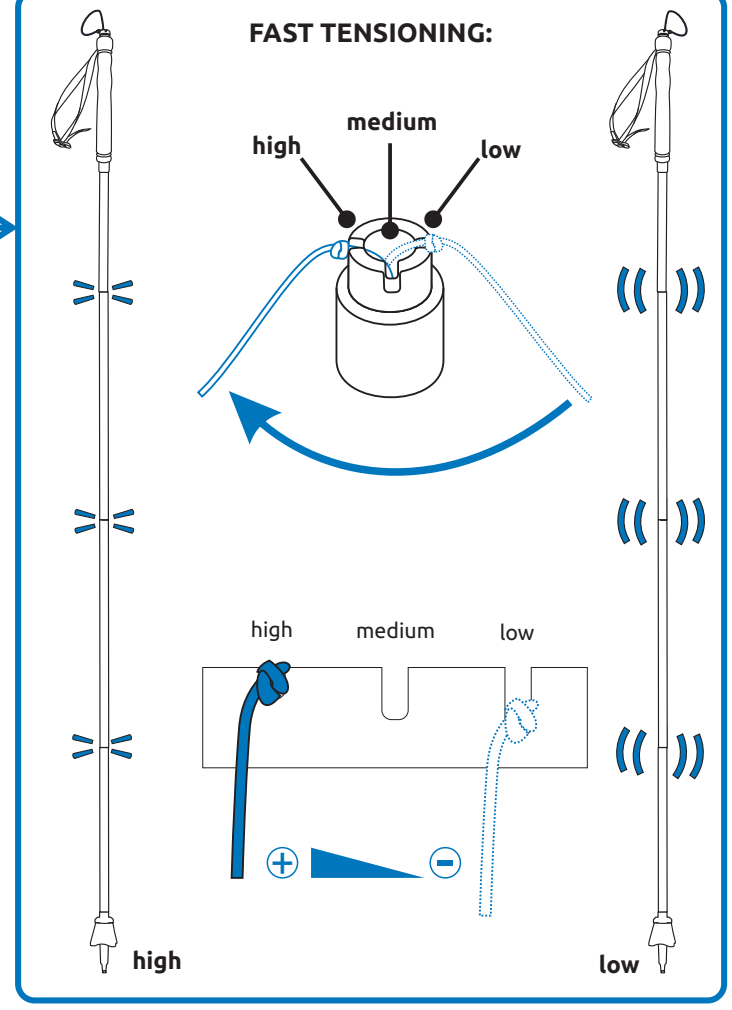
XENON POLES:



CORD TENSIONING:



FAST TENSIONING:



TELESCOPIC POLES (ALU FAST LOCK):

