



winter addendum 2020

**Review the new
products from the
FW2020 Addendum**

**These products
will be available
for the FW2020 Season**

ICE AXES

Technical Ice



CASSIN
X-Dream
2864



CASSIN
X-Dream Alpine
2865



CASSIN
X-All Mountain - Hammer
2990



CASSIN
X-All Mountain - Adze
2991

Mountaineering



CAMP
Corsa Alpine
2975



CAMP
Corsa Race
2973



CAMP
Corsa
2972



CAMP
Corsa Nanotech
2974



CASSIN
X-Light - Hammer
2518



CASSIN
X-Light - Adze
2519



CAMP
Alpina
2291

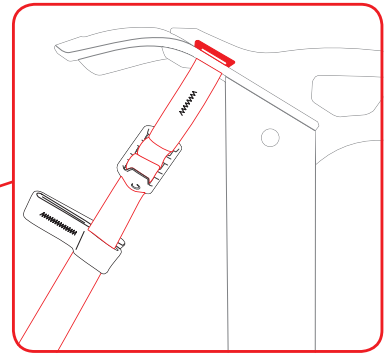


CAMP
Neve
2290

Technical features on Corsa Race



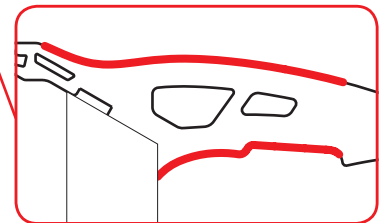
Non-welded head design for the best precision, weight and strength



Slot for seamless integration with Corsa leash



The lightest certified ice axe in the world

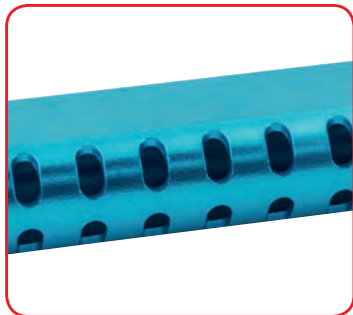


New head shape designed to improve handling

Corsa Race 2973



Reductions in shaft material and removal of the shaft plug cut weight to the absolute minimum



Machined holes in the grip reduce weight and improve handling



CASSIN X-Dream

2864

1ST CLASS

CC4U

ICE CLIMBING, MIXED CLIMBING

- Hyperlight, perfectly balanced, fully featured tool for technical dry, mixed and ice climbing
- New multi-part head design with four pick options -- the Mixte and Ice picks can be combined with hammer or adze for amazing versatility
- Comes standard with the Mixte pick; Ice, Race and Total Dry picks can be purchased separately
- Ergonomic handle with patented adjustment system to change between Dry and Ice angles
- The handle is constructed from extreme cold resistant polymer laid over the hot-forged aluminum alloy spine
- Micro-adjustable trigger finger ledges and X-Rest insert adjust the overall height and size of the handle
- X-Trigger pommel attaches to the shaft for a third position
- X-Grip 2 included

The X-Dream combines two tools in one – a fully optimized tool for technical ice and an aggressive dry tooling machine. This amazing ice axe not only features four different T rated picks for various terrain, but it also incorporates a patented adjustment system in the handle to fine tune the swing and pull even further. Use the allen bolt above the grip to switch between Dry and Ice positions. In the Dry position, the handle kicks upward for a more down and out pull. The Ice position drops the handle for a more natural swing on ice. Climbers can further refine the X-Dream with micro-adjustable trigger finger ledges (choose from two inserts – the X-Finger Small or the X-Finger Large – that can be flipped over to adjust the position) and the X-Rest insert which adjusts the overall height of the handle. All four picks feature the refined beak and tooth configuration CASSIN tools are known for. They are designed to provide solid sticks with minimal effort making them the perfect choice for brittle ice and technical mixed terrain. The X-Dream comes standard with the Mixte pick. The Ice pick brings the tip 6 mm closer to the handle, but maintains the same angle as the Mixte pick. The Mixte and Ice picks can be used alone or with the hammer or adze. The Race pick features a sharp beak for grappling with rock. The Total Dry pick is designed for maximum performance on overhanging dry tooling routes and in competitions.

Ref.	Product name	Weight		Modular head	Pick material	Shaft material	Spike material	CE EN 13089
		g	oz					
2864	X-DREAM	595	21.0	•	Chromoly Steel	2.5 mm 7075 Alu		Type 2



CASSIN X-Dream Alpine

2865

1ST CLASS

CC4U

ICE CLIMBING, ALPINISM

- Hyperlight, perfectly balanced, fully featured tool for alpine climbing and long technical ice routes
- New multi-part head design with four pick options -- the Mixte and Ice picks can be combined with hammer or adze for amazing versatility
- Comes standard with the Ice pick and hammer
- Ergonomic handle with integrated spike and patented adjustment system to change between Dry and Ice angles
- The handle is constructed from extreme cold resistant polymer laid over the hot-forged aluminum alloy spine
- Micro-adjustable trigger finger ledges and X-Rest insert for adjusting the height and size of the handle
- X-Grip 2 included

The X-Dream Alpine is the alpine climbing version of the award-winning X-Dream ice tool. It features the same innovative design and geometry that have made the X-Dream so popular, with the addition of the alpine handle that incorporates a spike designed for use in the cane position and a hammer to provide extra head weight and for pounding pitons and clearing ice. A variety of inserts allow the main grip to be modified both in volume and shape to help climbers craft the perfect grip. The result is a fully optimized tool for technical ice, mixed climbing, and adventurous alpine terrain. The most innovative feature on the X-Dream Alpine remains with the angle-adjustable handle that allows climbers to switch between Dry and Ice positions. Use the Allen bolt above the grip to switch between the two positions. In the Dry position, the handle kicks upward for a more down and out pull. The Ice position drops the handle for a more natural swing on ice. All four picks feature the refined beak and tooth configuration that CASSIN tools are known for. They are designed to provide solid sticks with minimal effort making them the perfect choice for brittle ice and technical mixed terrain. The new multi-part head design allows the same pick to be used alone or with the hammer or adze. The X-Dream Alpine comes standard with the Ice pick and hammer. The Mixte pick shifts the tip 6 mm higher, but maintains the same angle as the Ice pick. The Ice and Mixte picks can be used alone or with the hammer or adze. The Race pick features a sharp beak for grappling with rock. The optional Total Dry pick is designed for maximum performance on overhanging dry tooling routes and in competitions.

Ref.	Product name	Weight		Modular head	Pick material	Shaft material	Spike material	CE EN 13089
		g	oz					
2865	X-DREAM ALPINE	615	21.7	•	Chromoly Steel	2.5 mm 7075 Alu	6 mm 7075 Alu	Type 2



CASSIN X-All Mountain

2990 Hammer

2991 Adze

CC4U

ICE CLIMBING, ALPINISM

- Lightweight, technical ice tool designed for big mountain terrain
- New multi-part head design with two pick options that can be combined with hammer or adze
- 3 part handle can be optimized for different conditions and hand size
- Steel spike has a hole large enough to clip a carabiner for use with lanyards

The X-All Mountain is a technical ice tool designed to handle everything the big mountains throw at it. The balance and geometry are optimized to climb vertical ice with unparalleled proficiency and the rest of the features allow the tool to adapt to the varied terrain typical of advanced alpinism. The multi-part head can be configured with a hammer or adze. The three-part handle can be configured to fit hand size and the terrain being climbed. The steel spike is big enough to function as a cane and has a hole that is large enough to clip a carabiner for use with lanyards.

Ref.	Product name	Weight		Modular head	Pick material	Shaft material	Spike material	CE EN 13089
		g	oz					
2990	X-ALL MOUNTAIN - Hammer	571	20.2	•	Chromoly Steel	2.5 mm 7075 Alu	Chromoly steel	Type 2
2991	X-ALL MOUNTAIN - Adze	575	20.3	•	Chromoly Steel	2.5 mm 7075 Alu	Chromoly steel	Type 2



CAMP Corsa Alpine

2975

CC4U

MOUNTAINEERING, ALPINISM, SKI MOUNTAINEERING

- A lightweight axe with a steel head for technical terrain
- Designed for glacier travel, alpinism and ski mountaineering
- Pick is tapered to 3 mm for better penetration on hard snow and ice
- Nylon spike plug keeps snow out of the shaft
- Small head slot for seamless integration with the Corsa leash (sold separately)
- Machined grip for good handling

The Corsa Alpine joins the hyperlight Corsa aluminum shaft with an all-steel head for a high level of performance on technical terrain. The 45 cm length is particularly well suited for ski mountaineering and alpine adventures that require the performance of steel along with the benefits of lightweight. The single-curve shaft provides extra clearance without interfering with walking or plunging performance. A lightweight nylon spike plug keeps ice out of the shaft. The grip is machined for good handling and a small slot in the head allows for seamless integration with the Corsa leash (sold separately).



CAMP Corsa Race

2973

LIGHT&FAST

SKI COMP



COMPETITIVE SKI MOUNTAINEERING

- The lightest certified ice axe in the world
- Designed specifically for competitive ski mountaineering racers
- 50 cm length meets the minimum standard for the ISMF
- Reductions in shaft material and removal of the shaft plug cut weight to the absolute minimum
- Small head slot for seamless integration with the Corsa leash (sold separately)
- Machined holes in the grip reduce weight and improve handling

The Corsa Race is purpose built for competitive ski mountaineering racers who demand the lightest possible equipment. Weight reductions were achieved by reducing shaft material, machining holes in the grip which also improves handling, and removing the shaft plug. The result is a hyperlight ice axe that is still rated in accordance with the EN 13089 Type 1 standard. A small slot in the head allows for seamless integration with the Corsa leash (sold separately). Not suitable for use on vertical ice or mixed terrain.

Ref.	Product Name	Weight		Pick material	Shaft material	Spike material	Leash	CE EN 13089
		g	oz					
2975	CORSA ALPINE 45 cm	240	8.5	Chromoly steel	1.3 mm 7075 Alu		Corsa	Type 1
	CORSA ALPINE 55 cm	253	8.9					
	CORSA ALPINE 65 cm	264	9.3					
2973	CORSA RACE 50 cm	185	6.5	7075 Aluminum	1.3 mm 7075 Alu		Corsa	Type 1



CAMP Corsa
2972

MOUNTAINEERING, SKI MOUNTAINEERING, HIGH ALTITUDE

- Hyperlight ice axe for glacier travel and ski mountaineering
- Nylon spike plug keeps snow out of the shaft
- Small head slot for seamless integration with the Corsa leash (sold separately)
- Machined grip for good handling

The Corsa is a hyperlight ice axe designed for glacier travel and ski mountaineering. The aluminum alloy construction is lightweight, but still rated in accordance with EN 13089 Type 1 for use as a snow anchor and self-arrest. A lightweight nylon spike plug keeps snow out of the shaft. The grip is machined for good handling and a small slot in the head allows for seamless integration with the Corsa leash (sold separately). Not suitable for use on vertical ice or mixed terrain.



CAMP Corsa Nanotech
2974

1st CLASS

MOUNTAINEERING, SKI MOUNTAINEERING, HIGH ALTITUDE

- A technical version of the Corsa with a single-curve shaft and Sandvik Nanoflex steel reinforced tip and spike for a solid grip on hard snow and ice
- Designed for glacier travel and ski mountaineering
- Nylon spike plug keeps snow out of the shaft
- Small head slot for seamless integration with the Corsa leash (sold separately)
- Machined grip for good handling

The Corsa Nanotech is the most advanced mountaineering ice axe on the market. It merges the hyperlight properties of aluminum construction with a Sandvik Nanoflex steel reinforced tip and spike for a solid grip on hard snow and ice. The steel components dramatically increase the performance of these critical points without significantly increasing the weight of the axe. The single-curve shaft provides extra clearance without interfering with walking or plunging performance. A lightweight nylon spike plug keeps snow out of the shaft. The grip is machined for good handling and a small slot in the head allows for seamless integration with the Corsa leash (sold separately). Not suitable for use on vertical ice or mixed terrain.



Sandvik Nanoflex® is an innovative patented steel alloy that is 70% stronger and 20% harder than normal steel which allows for a significant reduction in the amount of metal used, thereby decreasing weight while maintaining strength.

Ref.	Product Name	Weight		Pick material	Shaft material	Spike material	Leash	CE
		g	oz					EN 13089
2972	CORSA 50 cm	202	7.1	7075 Aluminum	1.3 mm 7075 Alu		Corsa	Type 1
	CORSA 60 cm	232	8.2					
	CORSA 70 cm	261	9.2					
2974	CORSA NANOTECH 50 cm	225	7.9	7075 Aluminum / Nanoflex®	1.3 mm 7075 Alu	Nanoflex®	Corsa	Type 1
	CORSA NANOTECH 60 cm	253	8.9					
	CORSA NANOTECH 70 cm	284	10.0					



CAMP Corsa Leash

2976 25 g

A lightweight leash designed to fit any ice axe. Integrates seamlessly with the new Corsa range. The wrist loop is easy to open, quickly adjusts in size, and remains securely fixed in the desired position.

CRAMPONS

Technical Ice



CASSIN
Blade Runner
298001/298002



CASSIN
Alpinist Tech
2680



CASSIN
Dry
2860



CASSIN
T-Dry
2861

Mountaineering



CASSIN
Alpinist Pro - Auto / Semi-Auto
2449



CASSIN
Alpinist - Auto / Semi-Auto
2448



CAMP
Ascent - Auto / Semi-Auto
2978



CAMP
Ascent - Universal
2979



CAMP
Stalker - Universal
292001



CAMP
Stalker - Semi-Automatic
292002



CAMP
XLC Nanotech - Semi-Automatic
254402



CAMP
XLC Nanotech - Automatic
254403



CAMP
XLC 490 - Universal
254201



CAMP
XLC 470 - Semi-Automatic
254202



CAMP
XLC 390 - Automatic
254203

Ski Mountaineering



CAMP
Skimo Total Race
2583



CAMP
Skimo Race
2584



CAMP
Skimo Pure Nanotech
2981



CAMP
Skimo Nanotech
2586



CAMP
Skimo Tour
2585

Hiking



CAMP
Frost
0656



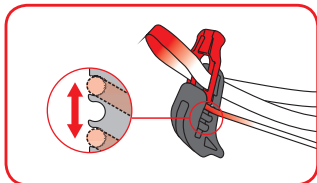
CAMP
Ice Master
0173



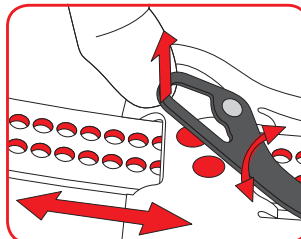
CAMP
Ice Master Light
2590

Technical features on Skimo Pure Nanotech

Three heel bail height settings



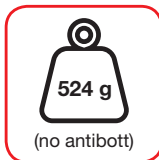
Micro-adjustable linking bar



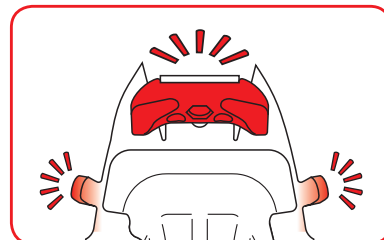
Low profile aluminum buckles



The lightest steel crampons in the world



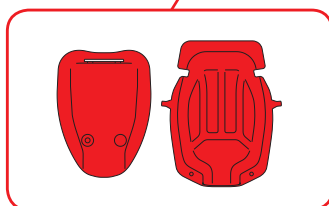
Proprietary T-Stop toe system



Skimo Pure Nanotech
2981

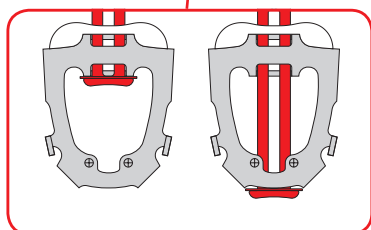
Two heel bail positions

Constructed from proprietary Sandvik Nanoflex® stainless steel

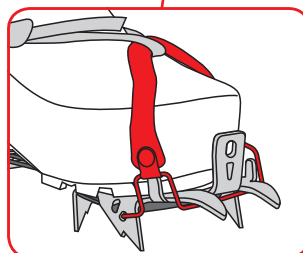


Dynamic anti-balling plates

Aggressive steel front points



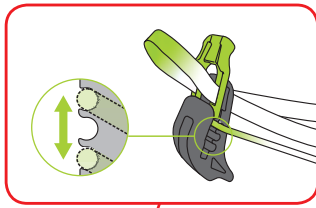
Linking bar with large and small range settings



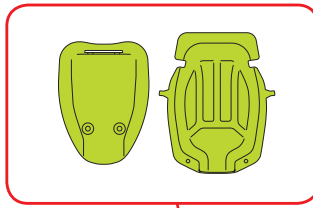
Semi-auto toe bails can be integrated for boots without toe welts

Technical features on Ascent

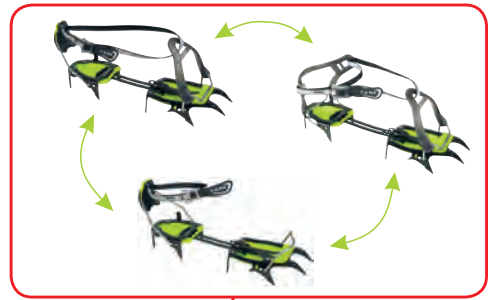
Three heel bail height settings



Dynamic anti-balling plates



Binding parts are interchangeable between full Auto, Semi-Auto, and full Universal



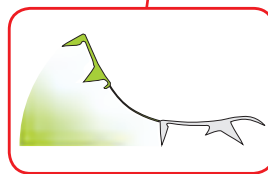
Low profile aluminum buckles

Soft TPU binding material molds perfectly to the boot for a secure fit



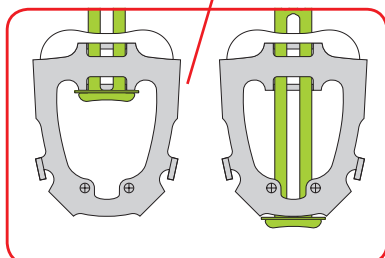
Ascent
Auto / Semi-Auto
2978

Two heel bail positions



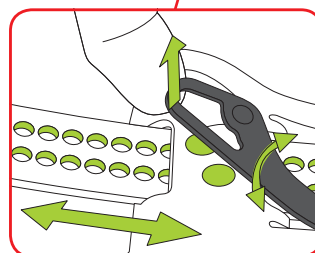
Flexible linking bar

Aggressive front points



Linking bar with large and small range settings

Two front bail positions



Micro-adjustable linking bar



298001



298002

CASSIN Blade Runner

298001 size 1

298002 size 2

1ST CLASS

CC4U

ICE CLIMBING, MIXED CLIMBING

- The most technical ice crampon on the market
- Patented design integrates the benefits of vertical and horizontal frame crampons
- The heel slide is constructed from proprietary Sandvik Nanoflex® steel for the optimal blend of strength, flex and lightweight
- Interchangeable front points are easy to switch from dual to mono, centered or offset
- Optional snow points optimize the crampons for alpine terrain
- Asymmetric design follows the contours of modern boots to ensure a precise fit
- New automatic front bail enhances the fit on modern boots and semi-automatic toe bails allow for use on boots without rigid toe lugs
- New anti-balling plates are more dynamic to help prevent snow build up
- Micro-adjustable linking bar for fine tuning the length
- New heel bail with 3 height settings
- Available in two sizes for optimal boot fit
- Comes pre-equipped with mono-points and automatic toe bails
- Two extra front points (ref. 0145) and semi-auto toe bails (ref. 0150) are included in the box
- Adjustable fold-over carrying case with lashing straps included

The Blade Runner represents the absolute top of the line in technical ice crampons. A wealth of innovative features combine to create a crampon that conforms to the ergonomics of modern boots, increases rigidity and performance, and adapts to conditions with a variety of front points and toe bail configurations. The heel slide integrates the linking bar with the heel piece for better torsional rigidity. This allows the Blade Runner to offer the best of both worlds by combining the power and stability of vertical frame crampons with the precision and ease of adjustment of horizontal frame designs. The entire heel slide is constructed from proprietary Sandvik Nanoflex® steel: an amazingly strong and tough stainless steel that allows for a reduction in the thickness of the frame from 2.75 mm to 1.8 mm, thereby reducing weight while simultaneously increasing strength and providing the right amount of longitudinal flexibility for a precise fit on modern boots with more extreme rocker. The front platform is constructed from traditional chromoly steel alloy to absorb impact energy and maintain solid rigidity under foot. The elimination of connection joints leaves little room for play and reduces much of the flex that can make crampons feel insecure on technical terrain. The sophisticated geometry of the front points interact with the secondary points on the main frame for easy penetration and superior hold even in the most fickle conditions. Switching the front points between dual and mono, centered or offset, is made easy with the hook and notch system. The optional snow points convert the Blade Runner into all mountain machines with their beveled design and precise shape and spacing that maximizes purchase in hard snow. Delivered standard with both automatic and semi-auto toe bails. New anti-balling plates are more dynamic to help prevent snow build-up underfoot.



Sandvik Nanoflex® is an innovative patented steel alloy that is 70% stronger and 20% harder than normal steel which allows for a significant reduction in the amount of metal used, thereby decreasing weight while maintaining strength.

Ref.	Product name	Weight		Weight no antibott	Size (*)	Boot type		Points	Frame material	Antibott	CE EN 893
		g	oz			g	European				
298001	BLADE RUNNER Size 1	940	33.2	828	36-46	•	•	13/14	Chromoly Steel / Nanoflex®	Included	•
298002	BLADE RUNNER Size 2	950	33.5	838	36-46	•	•	13/14	Chromoly Steel / Nanoflex®	Included	•

(*) Sizing varies depending on different boots, brands and models



CASSIN Dry
2860

CC4U

MIXED CLIMBING, ICE CLIMBING

- Bolt-on crampons based on the proven geometry of the Blade Runner
- Five-point front part attaches to the boot with 4 bolts and allows for ± 3 degrees of rotation
- Mono point can be set in two positions (centered and offset)
- Three-point heel part attaches to the boot with 2 bolts and allows for 10 mm of adjustment from front to back

The Dry is a bolt-on crampon designed for top level ice climbing and mixed climbing competitions. Based on the proven geometry of the Blade Runner, the mono point ensures single kick sticks and interacts with the secondary points for a high level of stability and control. The 5-point front part attaches to the boot with 4 bolts and allows for ± 3 degrees of rotation. The mono point can be set in two positions (centered and offset). The 3-point heel part attaches to the boot with 2 bolts and allows for 10 mm of adjustment from front to back. EN 893 certified with Kayland Ice Dragon, Kayland Dry Dragon and La Sportiva Mega Ice Evo boots.



CASSIN T-Dry
2861

CC4U

MIXED CLIMBING

- Bolt-on crampons stripped down for use exclusively on rock
- Three-point front part attaches to the boot with 4 bolts and allows for ± 3 degrees of rotation
- Mono point can be set in two positions (centered and offset)

The T-Dry is a bolt-on crampon designed exclusively for use on rock. The 3-point front part attaches to the boot with 4 bolts and allows for ± 3 degrees of rotation. The mono point can be set in two positions (centered and offset). Tested with Kayland Ice Dragon, Kayland Dry Dragon and La Sportiva Mega Ice Evo boots.

Ref.	Product name	Weight		Points	Frame material	CE
		g	oz			EN 893
2860	DRY	334	11.8	8	NiCrMo Steel	•
2861	T-DRY	206	7.3	3	NiCrMo Steel	



CAMP Ascent - Auto / Semi-Auto
2978

MOUNTAINEERING, ALPINISM

- Lightweight steel crampons for mountaineering
- Asymmetric design and flexible linking bar follow the contours of modern boots to ensure a precise fit
- Binding parts are interchangeable between Auto/Semi-Auto and Universal
- Compact frame takes up less space in the pack
- Delivered standard with automatic and semi-auto toe bails (Universal Heel sold separately)
- Dynamic anti-balling plates included
- Micro-adjustable linking bar for fine-tuning the length
- Dyneema® linking straps (available separately) reduce weight and allow the crampons to fold onto themselves for tighter packability
- 2 front bail positions, 2 heel bail positions, 3 heel bail height settings
- Adjustable fold-over carrying case with lashing straps included

The Ascent is a lightweight steel crampon for mountaineering. It uses a minimalist design to reduce weight without compromising performance. The compact frame is particularly rigid and the points are positioned for aggressive traction and maximum stability. The Ascent Auto/Semi-Auto is delivered standard with both automatic and semi-auto toe bails. Binding parts are interchangeable between Auto/Semi-Auto/Universal (sold separately). The fit can be optimized with the micro-adjustable flexible linking bar, 2 front bail positions, 2 heel bail positions and 3 heel bail height settings. Dynamic anti-balling plates prevent snow build-up underfoot.



CAMP Ascent - Universal
2979

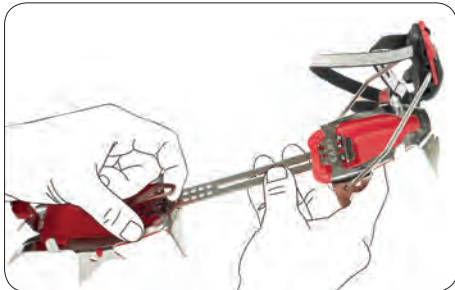
MOUNTAINEERING, ALPINISM

- Lightweight steel crampons for mountaineering
- Asymmetric design and flexible linking bar follow the contours of modern boots to ensure a precise fit
- Universal bindings are compatible with nearly any kind of mountaineering or hiking boot or shoe
- Binding parts are interchangeable between Auto/Semi-Auto/Universal (sold separately)
- Compact frame takes up less space in the pack
- Dynamic anti-balling plates included
- Micro-adjustable linking bar for fine-tuning the length
- Dyneema® linking straps (available separately) reduce weight and allow the crampons to fold onto themselves for tighter packability
- 2 front bail positions
- Adjustable fold-over carrying case with lashing straps included

The Ascent is a lightweight steel crampon for mountaineering. It uses a minimalist design to reduce weight without compromising performance. The compact frame is particularly rigid and the points are positioned for aggressive traction and maximum stability. Universal bindings are compatible with nearly any kind of boot or shoe. Binding parts are interchangeable between Auto/Semi-Auto/Universal (sold separately). The fit can be optimized with the micro-adjustable flexible linking bar. Dynamic anti-balling plates prevent snow build-up underfoot.

Ref.	Product name	Weight		Weight no antibott	Size (*)	Boot type			Points	Frame material	Antibott	CE EN 893
		g	oz			g	European	Automatic				
2978	ASCENT - AUTO / SEMI-AUTO	728	25.7	660	34-48		•	• + Ref.2988	10	NiCrMo Steel	Included	•
2979	ASCENT - UNIVERSAL	776	27.4	708	34-48	• + Ref.2452 + Ref.2588	• + Ref.2588	•	10	NiCrMo Steel	Included	•

(*) Sizing varies depending on different boots, brands and models



CAMP Skimo Pure Nanotech
2981


LIGHT&FAST 1ST CLASS



SKI MOUNTAINEERING, COMPETITIVE SKI MOUNTAINEERING

- The lightest steel crampons in the world
- Designed for ski mountaineering and competitive ski mountaineering racers
- Constructed from proprietary Sandvik Nanoflex® stainless steel
- Automatic binding with the proprietary T-Stop toe system
- Semi-auto toe bails are available separately for boots without toe welts
- The heel bail has been optimized to fit A/T ski boots and features 3 height settings for fine-tuning the fit
- Micro-adjustable linking bar with large and small range settings allows for a precise fit
- Dyneema® linking straps (available separately) reduce weight and allow the crampons to fold onto themselves for tighter packability
- Dynamic anti-balling plates and carrying case included
- Torx key for T-Stop adjustment included

The Skimo Pure Nanotech is a hyperlight steel crampon designed for ski mountaineering and competitive ski mountaineering racers. It uses the same frame design and T-Stop binding system as the Skimo Tour, but the frame is constructed entirely from proprietary Sandvik Nanoflex® stainless steel for a solid grip on hard snow and ice. The micro-adjustable linking bar with large and small range settings delivers a precise fit for all boot lengths. The linking bar can also be replaced with the optional Dyneema® linking strap (sold separately) to reduce weight and allow the crampons to be folded onto themselves for tighter packability. Semi-auto toe bails (sold separately) can be integrated for boots without toe welts. Dynamic anti-balling plates and carrying case included.

 Sandvik Nanoflex® is an innovative patented steel alloy that is 70% stronger and 20% harder than normal steel which allows for a significant reduction in the amount of metal used, thereby decreasing weight while maintaining strength.

Ref.	Product name	Weight		Weight no antibott	Size (*)	Sole length		Boot type		Points	Frame material	Antibott	CE
		g	oz			g	European	mm	mm				
2981	SKIMO Pure Nanotech	592	20.9	524	36-46	210-260	260-330	•	• + Ref.2589	10	Nanoflex®	Included	•

(*) Sizing varies depending on different boots, brands and models

Blade Runner
CASSIN Antibott
2987 2 pcs



Ascent
CASSIN Antibott
2993 2 pcs



Skimo Pure Nanotech
CAMP Antibott
2997 2 pcs



CASSIN Ascent Universal heel bail
2988 2 pcs



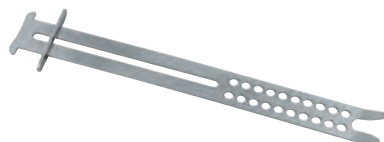
CASSIN Ascent Semi-Auto Toe Bail
2992 2 pcs



CASSIN Ascent Linking Bar
2994 2 pcs



CAMP Skimo Pure Nanotech Linking Bar
2998 2 pcs



ICE SCREWS

Ice Screws



CASSIN
Rocket 13 cm
298513



CASSIN
Rocket 16 cm
298516



CASSIN
Rocket 19 cm
298519



CASSIN
Rocket 22 cm
298522



CASSIN
Rocket XS 9 cm
2999



CASSIN
Rocket Plus 13 cm
298613



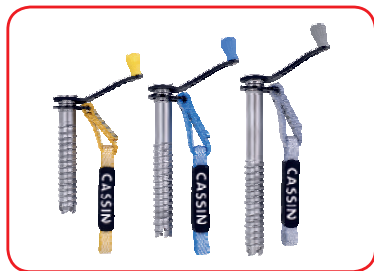
CASSIN
Rocket Plus 16 cm
298616



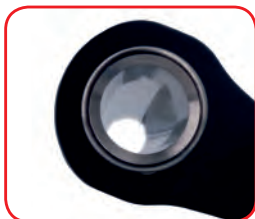
CASSIN
Rocket Plus 19 cm
298619

Technical features on Rocket Plus

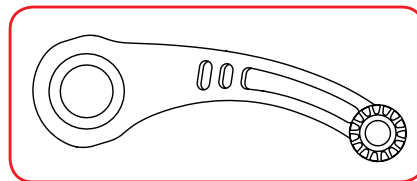
13, 16, 19 cm



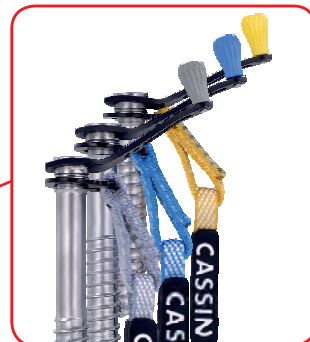
Very smooth internal surface for faster insertion and easier ice removal



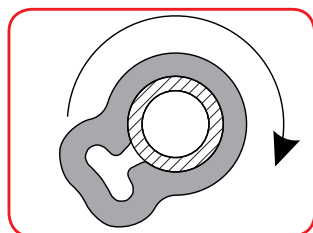
Fixed aluminum alloy levers for the fastest possible placements



Low profile connecting ring



Differentiated color knobs for easy identification



Chromoly steel hanger spins freely on the screw which allows the screw to be placed and removed while clipped to the rope

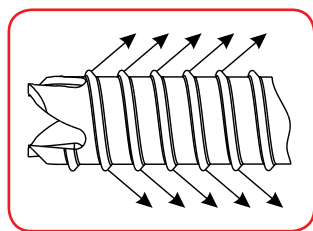
Rocket Plus 2986



Dyneema® Loop for racking and short fixing at anchors



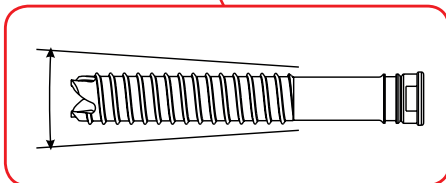
Lightweight, strong and durable chromoly steel construction



Reverse angle threads for smooth driving and maximum holding power



Patented (pat. pend.) front teeth, engineered for the fastest and easiest placements even in the coldest, most compact ice



Conical thread for easier insertion



Integrated Dyneema® sling to eliminate the need for a quickdraw



CASSIN Rocket

- 298513** 13 cm
- 298516** 16 cm
- 298519** 19 cm
- 298522** 22 cm

ICE CLIMBING, ALPINISM

- Top-level ice screws designed for advanced alpinists and ice climbers
- Lightweight, strong and durable chromoly steel construction
- Reverse angle threads for smooth driving and maximum holding power
- Patented front teeth, engineered for the fastest and easiest placements even in the coldest, most compact ice
- Chromoly steel hanger aligns with the screw to pull in an optimal direction for maximum holding power and racks well on either side of the harness
- Fold out crank knobs are color coded for easy identification
- EN 568 certified

The Rocket is a top-level workhorse for alpinists and ice climbers who rely on their ice screws in big mountain terrain. The chromoly steel construction is lightweight, strong and durable. The patented front teeth have been engineered for the fastest placements even in the coldest, most compact ice. Reverse angle threads ensure smooth driving and maximum holding power. Compact chromoly hanger aligns with the screw to pull in an optimal direction and racks well on both sides of the harness. Fold out crank knobs are color coded for easy identification.



CASSIN Rocket XS 9 cm

- 2999** 9 cm

ICE CLIMBING, ALPINISM

- A short 9 cm version of the Rocket ice screw for thin ice
- Lightweight, strong and durable chromoly steel construction
- Reverse angle threads for smooth driving and maximum holding power
- Patented front teeth, engineered for the fastest and easiest placements even in the coldest, most compact ice
- Chromoly steel hanger aligns with the screw to pull in an optimal direction for maximum holding power and racks well on either side of the harness
- Fold out crank knobs are color coded for easy identification
- For progression only, not certified

The Rocket XS is a shorter version of the Rocket ice screw for thin ice. The chromoly steel construction is lightweight, strong and durable. The patented front teeth have been engineered for the fastest placements even in the coldest, most compact ice. Reverse angle threads ensure smooth driving and maximum holding power. Compact chromoly steel hanger aligns with the screw to pull in an optimal direction and is designed to rack well on both sides of the harness. Fold out crank knobs are color coded for easy identification.



Ref.	Product name	Weight		Color	Material				CE EN 568
		g	oz		Screw	Hanger	Crank	Webbing	
298513	ROCKET 13 cm	116	4.1	Yellow	CrMo Steel	NiCrMo Steel	Carbon steel		•
298516	ROCKET 16 cm	130	4.6	Blue	CrMo Steel	NiCrMo Steel	Carbon steel		•
298519	ROCKET 19 cm	142	5.0	Grey	CrMo Steel	NiCrMo Steel	Carbon steel		•
298522	ROCKET 22 cm	155	5.5	Green	CrMo Steel	NiCrMo Steel	Carbon steel		•
2999	ROCKET XS 9 cm	94	3.3	Red	CrMo Steel	NiCrMo Steel	Carbon steel		



298613

CASSIN Rocket Plus**298613** 13 cm**298616** 16 cm**298619** 19 cm**1st CLASS**

ICE CLIMBING, ALPINISM

- Rocket ice screws with integrated Dyneema® slings eliminate the need for a quickdraw
- Lightweight, strong and durable chromoly steel construction
- Reverse angle threads for smooth driving and maximum holding power
- Patented front teeth, engineered for the fastest and easiest placements even in the coldest, most compact ice
- Chromoly steel hanger spins freely on the screw which allows the screw to be placed and removed while clipped to the rope
- Fixed Dyneema® sling has two loops – the top loop is for racking and short fixing at anchors, the bottom loop is designed to be pre-equipped with a carabiner
- Fixed aluminum alloy levers for the fastest possible placements and differentiated color knobs for easy identification
- EN 568 certified



298616



298619

The Rocket Plus uses an integrated Dyneema® sling to eliminate the need for a quickdraw. With a Nano 22 or a Photon Wire carabiner, it is one of the lightest ice screws in the world and has the benefit of being able to be placed and removed while clipped to the rope. The fixed Dyneema® sling has two loops for easy operation. The top loop is for racking and short fixing at anchors and the bottom loop is designed to be pre-equipped with a carabiner. The chromoly steel construction is lightweight, strong and durable. The patented front teeth have been engineered for the fastest placements even in the coldest, most compact ice. Reverse angle threads ensure smooth driving and maximum holding power.



Ref.	Product name	Weight		Color	Material				CE EN 568
		g	oz		Screw	Hanger	Crank	Webbing	
298613	ROCKET PLUS 13 cm	118	4.2	Yellow	CrMo Steel	NiCrMo Steel	Aluminum alloy	Dyneema®	•
298616	ROCKET PLUS 16 cm	133	4.7	Blue	CrMo Steel	NiCrMo Steel	Aluminum alloy	Dyneema®	•
298619	ROCKET PLUS 19 cm	144	5.1	Grey	CrMo Steel	NiCrMo Steel	Aluminum alloy	Dyneema®	•

WINTER GLOVES

K Line



CAMP
K Warm
2995



CAMP
K Air
2996

Geko Line



CAMP
Geko Ice Pro
2821



CAMP
Geko Ice
2820



CAMP
Geko Hot
2822

G Line



CAMP
G Comp Evo
2807



CAMP
G Comp Warm
2826



CAMP
G Tech Dry
2829



CAMP
G Hot Dry
2827



CAMP
G Hot Dry Lady
2828



CAMP
G Puff
2833



CAMP
G Air
2834



CAMP
G Lite Wind
2830



CAMP
G Wool
2831

Mitt'N Line



CAMP
Air Mitt
3068



CAMP
Tempest
Mitt Evo
2989



CAMP
Hot Dry Mitt'N
2832



CAMP
Hotmitt'N
2837



CAMP
Summitt'N
2836



CAMP
Drymitt'N
2838

Technical features on K Warm glove



* Features vary by model

Thermal insulation

- 0 - No thermal insulation
- 1 - Minimal thermal insulation
- 2 - Medium thermal insulation
- 3 - High thermal insulation
- 4 - Maximum thermal insulation

The perceived warmth and the thermal insulation of the gloves can be influenced by several factors such as humidity, wind, physical conditions, etc.



THERMAL INSULATION



TOUCHSCREEN COMPATIBLE



SWEAT CLOTH



WINDBREAK



WRIST LEASH



ETCHED LEATHER



WATERPROOF



GRIP'R



PRIMALOFT



BREATHABLE



HANGING LOOP



Black / Lime

CAMP K Warm

2995

1ST CLASS



SKI MOUNTAINEERING, MOUNTAINEERING, HIKING, LIFESTYLE

- Insulated glove constructed using unique 3-D knitting for next level ergonomics and flexibility
- DRYZONE® waterproof/breathable membrane
- PrimaLoft Gold 60 g/m² insulation
- Microfleece lining for all-day comfort
- Silicone inserts on the palms for exceptional grip
- Thumb and index finger are touch screen compatible
- Elastic cuff for a performance fit
- Elastic wrist leashes

The K Warm uses innovative 3-D knitting technology for a design that delivers next level ergonomics, flexibility and performance. Features a DRYZONE® waterproof/breathable membrane and PrimaLoft Gold 60 g/m² insulation for a high level of protection from the elements. The inner is lined with microfleece for all-day comfort and silicone inserts on the palms provide exceptional grip.



Grey / Lime

CAMP K Air

2996

SKI MOUNTAINEERING, MOUNTAINEERING, HIKING, LIFESTYLE

- Light and breathable glove constructed using unique 3-D knitting technology
- Windproof membrane is knitted into the main body material
- Perforated palm for maximum breathability
- Thumb and index finger are touch screen compatible
- Short elastic cuff for the best range of motion
- Elastic wrist leashes

The K Air is a hyperlight glove designed to deliver a very natural and free fit and feel. 3-D knitting manufacturing technology results in a glove with the very best ergonomics, fit and dexterity. The perforated palm and knitted main body are extremely breathable, but the glove remains wind resistant apart from the palm with a membrane that is knitted into the material. The short cuff is a welcome feature for minimalist users who need gloves, but don't want to know they are even wearing them.

Ref.	Product name	Size	Weight / Pair Size (L)									
			g	oz								
2995	K WARM	S-M-L-XL-XXL-XXXL	135	4.8	4	•	•	•	•	•	•	•
2996	K AIR	S-M-L-XL-XXL-XXXL	100	3.5	1	•	•	•	•	•	•	•

CAMP G Comp Evo
2807

LIGHT&FAST SKI COMP

COMPETITIVE SKI MOUNTAINEERING, SKI MOUNTAINEERING



Red / Light Blue

- Soft, dexterous, breathable gloves for cold-weather aerobic activities
- Lightweight Windmit'N hides in a pocket on the wrist to be pulled out for protection from wind and cold
- Perforated palm for maximum breathability
- Grip'R pads on the palm for extra grip
- Reinforcements between the thumb and index finger ensure strength and durability
- Terry wipe on the back of the thumb
- Thumb and index finger are touch screen compatible
- Elastic wrist leashes, clippable hanging loops, and buckles for clipping the gloves together

The G Comp Evo is an ideal glove for ski mountaineering races, spring ski tours and cold-weather aerobics. The glove is constructed from soft, dexterous, breathable fabric for great comfort and temperature regulation when on the move. When the fingers need more protection, simply pull out the hidden Windmit'N to cover the fingers and thumb while leaving the palm exposed for good grip. The palm is perforated for maximum breathability and features Grip'R pads for extra grip and dexterity. Reinforcements between the thumb and index finger ensure strength and durability.

NOTE. Help ensure the longevity of the Windmit'N by always removing them when working with bindings and skins.

Ref.	Product name	Size	Weight / Pair Size (L)												
			g	oz											
2807	G COMP EVO	XS-S-M-L-XL-XXL	115	4.1	1	•		•	•	•	•	•	•		



Black

CAMP Air Mitt
3068



SKI MOUNTAINEERING, MOUNTAINEERING, HIKING

- Hyperlight insulated mittens that fold away to expose the fingers for technical maneuvers
- Small magnets hold the fold-away flaps in place when opened
- Silicone inserts on the palms for extra grip
- Outer material is lightweight and weather resistant
- Microfleece lining for warmth and comfort
- PrimaLoft® Gold 100 g/m² insulation on the main body, PrimaLoft® Gold 60 g/m² insulation on the palm
- Elastic wrist leashes and buckles for clipping the mittens together
- Carrying bag included

The Air Mitt is a hyperlight insulated mitten designed to give cold-weather aerobic athletes the benefits of a mitten while still allowing access to the fingers for technical maneuvers. The fingers can be exposed quickly and easily with fold-away flaps. Small magnets hold the fold-away flaps in place when they are opened. Lightweight construction uses weather resistant nylon and a microfleece lining for warmth and comfort. Silicone inserts on the palm for extra grip. Dexterous PrimaLoft® Gold 100 g/m² insulation on the main body and PrimaLoft® Gold 60 g/m² insulation on the palm for the right amount of warmth when on the move.



Black

CAMP Tempest Mitt Evo
2989



SKI MOUNTAINEERING, MOUNTAINEERING, ALPINISM

- Insulated mittens that fold away to expose the fingers and thumb for technical maneuvers
- Small magnets hold the fold-away flaps in place when opened
- Open-Close system on the wrist can be operated with one hand – just pull on the Close side to snug it up and the Open side to release and open
- Palm is reinforced with synthetic fabric for extra grip and durability
- Outer material is lightweight nylon with WR treatment
- Microfleece lining for warmth and comfort
- PrimaLoft® Gold 200 g/m² insulation on the main body, PrimaLoft® Gold 100 g/m² insulation on the palm, PrimaLoft Gold 160 g/m² on the thumb
- Terry wipe on the back of the thumb
- Elastic wrist leashes and buckles for clipping the mittens together
- Carrying bag included

The Tempest Mitt Evo is a lightweight insulated mitten that allows the fingers and thumb to be exposed quickly and easily with fold-away flaps. This brings the benefits of mittens to winter athletes who also need their fingers for technical maneuvers. Small magnets hold the fold-away flaps in place when they are opened. The outer material is lightweight and highly weather resistant and each part of the glove uses insulation that is optimized for the specific zone - PrimaLoft® Gold 200 g/m² insulation on the main body, PrimaLoft® Gold 100 g/m² insulation on the palm, PrimaLoft Gold 160 g/m² on the thumb. The Open-Close system on the wrist is easy to operate with one hand – just pull on the Close side to snug it up and the Open side to release and open. The palm is reinforced with synthetic fabric for good grip and durability and the microfleece lining ensures a high level of warmth and comfort.

Ref.	Product name	Size	Weight / Pair Size (M)										
			g	oz									
3068	AIR MITT	S-M-L-XL	105	3.7	4	•	•	•	•	•	•	•	•
2989	TEMPEST MITT EVO	S-M-L-XL	150	5.3	4	•	•	•	•	•	•	•	•

C.A.M.P. Testimonials & Partners

CLIMBING-MOUNTAINEERING



Alessandro Bau (Ita)



Yann Borgnet (Fra)



Janja Garnbret (Slo)



Stefano Ghisolfi (Ita)



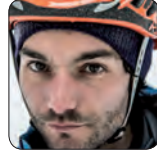
Tamara Lunger (Ita)



Simone Moro (Ita)



Rob Pizem (Usa)



Martin Riegler (Ita)



Florian Riegler (Ita)



Marcin Yeti Tomaszewsky (Pol)



Denis Urubko (Rus)

Allfrey David (Usa)
 Angeloz Didier (Fra)
 Arnold Mike (Usa)
 Bacci David (Ita)
 Bennett Scott (Usa)
 Berlioz Matthieu (Fra)
 Bohin Sébastien (Fra)
 Bonhomme Paul (Fra)
 Bono Katie (Usa)
 Brenna Cristian (Ita)
 Cararach Soler Roger (Spa)
 Carnati Stefano (Ita)
 Caserini Elisabetta (Ita)
 Cesa Christian (Ita)
 Clavel Arnaud (Ita)
 Colli Beatrice (Ita)
 Cornamusini Alessio (Ita)
 Čujić Borna (Cro)
 De Jesús Martín Lucas (Spa)
 De Zaiacom Matteo (Ita)
 Erdmann Ben (Usa)
 Flemming Jenn (Usa)
 Frigerio Martina (Ita)
 Fossali Ludovico (Ita)
 Fowler Wes (Usa)
 Ghisolfi Claudia (Ita)
 Gianola Luca (Ita)
 Giglio Matteo (Ita)
 Gollo Asja (Ita)
 González Álex (Spa)
 Gotta Alberto (Ita)
 Grau Josep (Spa)

Gross Josh (Usa)
 Hadley Nathan (Usa)
 Herrington Blake (Usa)
 Huey Jesse (Usa)
 Janin Rudi (Ita)
 Kaplina Julia (Rus)
 Kazbekova Ievgeniia (Ukr)
 Kempney Tyler (Usa)
 Kling Josh (Usa)
 Lasagabaster Ander (Spa)
 Libera Rossano (Ita)
 Lichter Justin (Usa)
 Lochner Leonie (Ger)
 Matharan Paul (Fra)
 Marčič Nejc (Slo)
 Maureau Stéphanie (Fra)
 Miller Delaney (Usa)
 Montgomery Aaron (Usa)
 Nicolini Franco (Ita)
 Oprandi Omar (Ita)
 Osteyee Ian (Usa)
 Passini Luca (Ita)
 Peiró Jaume (Spa)
 Porter Jed (Usa)
 Pozzoli Giovanna (Ita)
 Raether Andy (Usa)
 Ravel Marc (Fra)
 Rinn Michael (Ger)
 Rogora Laura (Ita)
 Roth Cody (Usa)
 Rudigier Max (Aut)
 Rueck Ben (Usa)

Salamanca Fernandez
 Angel Luis (Spa)
 Sauter Libby (Usa)
 Selak Gregor (Slo)
 Shapiro Jeff (Usa)
 Smiley Mark (Usa)
 Smith Nate (Usa)
 Snobeck Chris (Usa)
 Sorkin Madaleine (Usa)
 Steuer Lisi (Aut)
 Stitzinger Luis (Ger)
 Strazar Luka (Slo)
 Tardivel Pierre (Fra)
 Tentori Simone (Ita)
 Tepfer Max (Usa)
 Tomatis Giorgio (Ita)
 Úbeda Alejandro
 González (Spa)
 Vassilopoulos Kyle (Usa)
 Vennon Bisharat Jen (Usa)
 Vidmar Maja (Slo)
 Virat Julia (Fra)
 Vachon Ryan (Usa)
 Von Melle Alix (Ger)
 Von Melle Alix (Ger)
 Warme Amity (Usa)
 Wärthl Michael (Ger)
 Watson Sarah (Usa)
 Zangrilli Fabrizio (Usa)
 Zariquiey Bibiana (Spa)
 Žumer Martin (Slo)

SKI MOUNTAINEERING



Robert Antonioli (Ita)



Lorna Bonnel (Fra)



Nicolò Canclini (Ita)



Matteo Eydallin (Ita)



Davide Magnini (Ita)



Elena Nicolini (Ita)



Federico Nicolini (Ita)



Anton Palzer (Ger)

Anderson Sierra (Usa)
 Barazzuol Filippo (Ita)
 Beccari Filippo (Ita)
 Bertolina Samantha (Ita)
 Boffelli William (Ita)
 Brown Jon (Usa)
 Chamoux Benjamin (Fra)
 Compagnoni Giulia (Ita)
 Confortola Stefano (Ita)
 David Clémence (Fra)
 Ellmenreich Baptiste (Fra)
 Felicetti Giorgia (Ita)
 Gaston John (Usa)

Hiatt Jari (Usa)
 Huber Joseph (Ger)
 Juillaguet Swann (Fra)
 Knopf Stefan (Ger)
 Kremer Stevie (Usa)
 Kuhar Nejc (Slo)
 LaRochelle Nikki (Usa)
 Lautenbacher Toni (Ger)
 Maguet Nadir (Ita)
 Murada Giulia (Ita)
 Polisportiva Albosaggia (Ita)
 Rossi Giovanni (Ita)
 Sbalbi Tony (Fra)

Sci Club Alta Valtellina (Ita)
 Sci Club Val Tartano (Ita)
 Senk Anze (Slo)
 Shehan Joel (Usa)
 Smith Bryan (Usa)
 Sostizzo Matteo (Ita)
 Staberg Grace (Usa)
 Taam Max (Usa)
 Veronese Ilaria (Ita)
 Wickenhauser Bryan (Usa)
 Young Jessie (Usa)
 Zulian Ivo (Ita)

GROUPS

Access Fund (Usa)
 American Alpine Club (Usa)
 American Mountain Guides Association (Usa)
 Aspen Alpine Guides (Usa)
 Colorado Mountain Club (Usa)
 Colorado Mountain School (Usa)
 Ensa - École Nationale des sports de montagne (Fra)
 Gruppo Ragni della Grignetta (Ita)
 Guais del Picu (Spa)

Guide alpine Cortina (Ita)
 Guide alpine Mountain Experience (Ita)
 Guide alpine Orizzonti Verticali (Ita)
 Mangia Trekking (Ita)
 Mazamas (Usa)
 Mountain Education Development (Usa)
 Muntania Outdoors (Spa)
 Sierra Mountain Guides (Usa)



ÉCOLE NATIONALE
 DES SPORTS DE MONTAGNE



WARNING!

Climbing, caving, via ferrata and other "vertical" sports for which CAMP and CASSIN products can be used are potentially dangerous. If you use our equipment, you are responsible for learning the proper use of the equipment and proper climbing techniques, and accept all risk inherent in these activities. The weights indicated in this workbook may be subject to change due to manufacturing tolerance limits, to the integral nature of raw materials used, and to climate and storage conditions. Products made of textile and plastic materials are more subject to weight variations. Technical specifications may change without notice.

Photo credits: Andrew Hancock, Paolo Sartori, Mathis Dumas, Matteo Della Bordella

Products photo: Mario Spreafico, Luca Lozza

Graphic project: PrePrint - Lecco

Printing: printed in Italy, July 2020

Cover photo: Ben Rueck projecting on *The Witcher* - © Andrew Hancock



CAMP

are brands of the **CAMP GROUP**

CAMP SPA

CONCEZIONE ARTICOLI MONTAGNA PREMANA

Via Roma, 23 - 23834 Premana (LC) - ITALY

Tel. +39 0341 890117 - Fax +39 0341 818010

www.camp.it - contact@camp.it



The art of problem solving: the huge 60-meter traverse climbed by the Ragni di Lecco (Lecco Spiders) during the first ascent of the west face of Bhagirathi IV (6193 m, Garhwal Himalaya, India) - © Matteo Della Bordella

summer addendum 2021
3132 ENG



8 005436 114538