

DRUID PRO

CAMP
Safety
TM ®



2233 DRUID PRO

A lightweight compact auto-braking descender for rope access and rescue designed for semi-static ropes ranging from 10 to 11 mm.

Designed for expert users; the lever does not have the anti-panic function. The body and lever are made of robust hot-forged aluminum alloy. Mechanical parts are made of precision-cast stainless steel. The internal mechanism and locking cam use a patented design for smooth action on the rope which prevents rapid wear-and-tear and absorbs energy from small shocks with a slight amount of rope slippage.

The fluid action on the rope also allows the Druid to function well for rope ascent. The cam can be de-activated with a trigger to allow quick sliding of the rope in situations with no load or limited load.

Steel ring for attaching a keeper cord.

Several certifications:

- **EN12841/C** as a descender of the working line for workers up to 120 kg, it can also be used for rope access rescue up to 200 kg;
- **EN 341/2A** as an emergency evacuation device on a single line for workers up to 120 kg, 11 mm semi-static rope (Lithium 11 mm).
- **EN 15151-1** for climbing structures using mountaineering techniques with dynamic ropes ranging from 9.9 to 11 mm.

CE EN 12841/C - EN 341/2A
EN 15151-1
Rescue use Max 200 kg

TEAM RESCUE



550



DRUID PRO - Art.2233

- ① Back Flange: hot forged aeronautic grade aluminum alloy for high strength and resistance to wear-and-tear.
- ② Front Flange: hot forged aeronautic grade aluminum alloy with markings to indicate the proper direction for inserting the rope.
- ③ Attachment Hole: large diameter allows for complete rotation of a locking carabiner. The carabiner cannot be attached unless the device is completely closed.
- ④ Lowering Lever: hot forged aeronautic grade aluminum alloy and precision cast stainless steel with an ergonomic shape and double hinge for good leverage and control when lowering.
- ⑤ Fixed Cam: precision cast stainless steel for high strength and resistance to wear-and-tear. Also serves as a rope guide when lowering to limit contact between the rope and the aluminum side walls.
- ⑥ Mobile Cam: precision cast stainless steel with proprietary geometry that allows the cam to rotate into place alongside the rope. This makes the action very rope-friendly.
- ⑦ Cam Trigger: the small flange on the bottom of the Mobile Cam can be used to momentarily hold the cam open for paying out slack or to initiate a descent when there is a lot of friction.
- ⑧ Lowering mechanism without anti-panic function, designed for expert users.
- ⑨ Rivets: Precision CNC stainless steel. The large diameter and precision pressing ensure exceptional strength and performance over the life of the device.
- ⑩ Hole to insert a cord for securing the device, preventing it from falling.

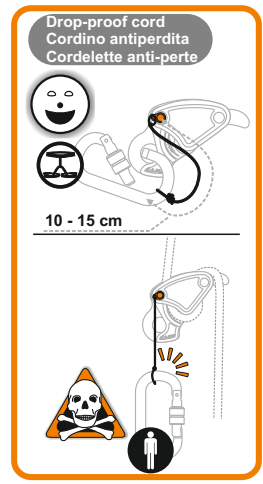
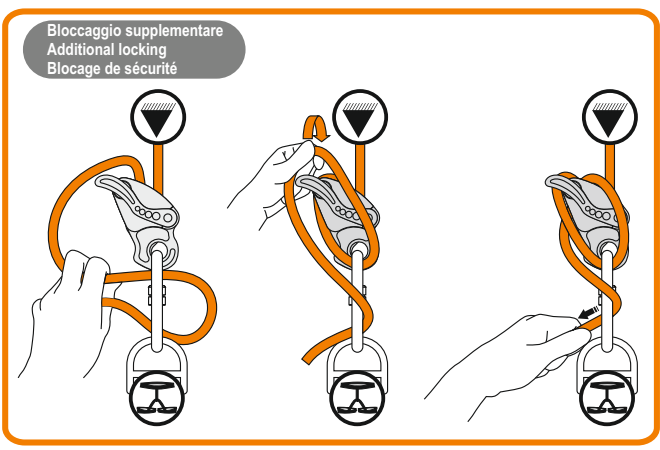
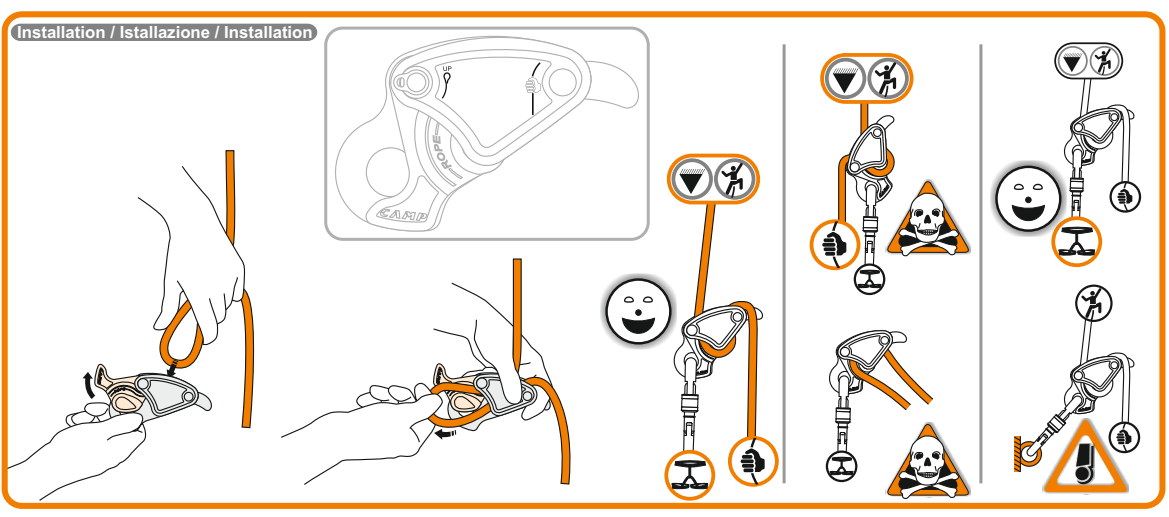
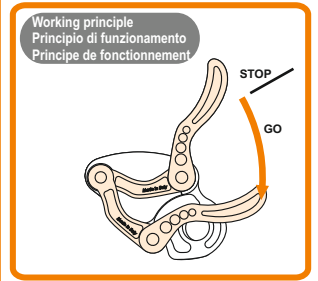
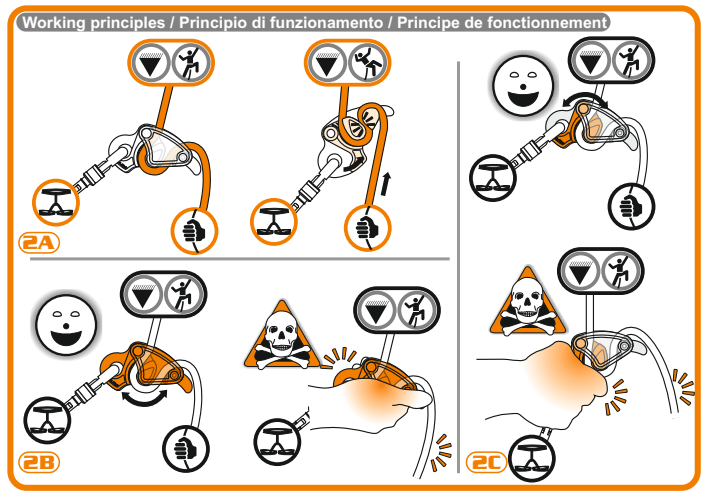


Rope compatibility
Compatibilità della corda
Compatibilité de la corde

EN 12841C
● = EN 1891 Type A 10 ≤ Ø ≤ 11mm

EN 341/2A
● = EN 1891 Type A Ø 11mm

EN 15151-1
① = EN 892 Single 9.9 ≤ Ø ≤ 11mm



Discesa EN 12841C / EN 12841C Descending / Descente EN 12841/C

EN 795

A

EN 12841A

EN 12841B

B

EN 12841A

C

EN 12841C
MAX 120 kg
● = EN 1891 Type A
10 ≤ ϕ ≤ 11 mm

Spostamento orizzontale
Horizontal movement
Déplacement horizontal

Discesa EN 341/2A
EN 341/2A Lowering
Descente EN 341/2A

EN 795

EN 795

Soccorso con carichi elevati, solo per utilizzatori esperti
Rescue use with heavy loads, experts only
Secours avec charge élevée, seulement pour experts

RESCUE MAX 200 kg
● = EN 1891 Type A 10 ≤ ϕ ≤ 11mm

EN 795

EN 12841A
200 kg MAX

EN 795

EN 12841A
200 kg MAX

200 kg MAX

SOLO UTILIZZATORI ESPERTI / EXPERT USERS ONLY
SEULMENT UTILISATEURS EXPERT / NUR FÜR FORTGESCHRITTENE BENUTZER
SOLO PARA USUARIOS EXPERIMENTADOS / ALLEEN VOOR ERVAREN GEBRUIKERS

89/686/EEC

