



winter addendum 2013



Legend

CAMP

Products carrying the CAMP brand. Exceptions are made for several categories and products that carry the CASSIN brand in homage to the memory of Riccardo Cassin and his company, which C.A.M.P. purchased in 1997. The CAMP brand embodies an eclectic and unique blend of history, innovation, lightweight, quality, and sleek Italian design.

CASSIN

Products carrying the CASSIN brand. The roots of this technical equipment date back to 1935 when Riccardo Cassin made the first ascent of the north face of the Cima Ovest di Lavaredo (now rated 5.11d). He established his innovative climbing company down valley from C.A.M.P. in 1952. C.A.M.P. purchased the CASSIN brand in 1997 and honors Riccardo's memory by stamping his name on some of the most technical products in the line including Technical Ice Axes & Crampons, Big Wall/Aid Climbing, and Bouldering. Other select products with an established history under the CASSIN brand also carry his name.

NEW '13

New products for Winter 2013.

UPDATED '13

Products with updates for Winter 2013.

LIGHT&FAST

Products that are either the lightest in the world or lightest in their class.

1ST CLASS

Products with superior points of innovation making them the absolute top of the line.

BEST SELLER

Popular products that typically strike a fine balance between performance and price.

LADY

Products designed specifically for women.

JUNIOR

Products designed specifically for children.

SKI COMP

Products designed for ski mountaineering competitions. Usually the lightest and fastest in the world.

CC4U

Special markings for ice axes and crampons to show when points are dull beyond their safe limit.

Index

Ice Axes	4-5
Crampons	6-7
Harnesses	8-9
Campack	10-13
Essential Line	14-22
Winter Gloves	24-26
Snow Gear	28-29



Winter Addendum 2013

The 2013 Winter Addendum integrates and completes our 2013 Dealer Workbook presented this past Summer at the OutDoor Show in Friedrichshafen and at the Outdoor Retailer Show in Salt Lake City.

Following the same guidelines as the Workbook, the Addendum is the most complete and up-to-date compendium for any and all necessary technical information about new C.A.M.P. products. The product descriptions have been structured so that the suggested activities and the main technical features are easily identified and a detailed text will provide further insights for obtaining the best results from the gear. Overview pages for categories with new or updated products make it easy to see the entire range for the coming season.

We believe that innovation needs to be presented in depth, especially when it comes to products as revolutionary as the Blade Runner – the new go-to crampon for ice and mixed climbing – or the new hyperlight concepts for competitive ski mountaineering like the Alp Racing harness and Skin and Rapid Racing CAMPacks. These are truly amazing products that have been designed in cooperation with the world's leading ski mountaineers. Be sure to also review the rest of the new and updated packs, gloves, and winter gear – like the innovative Rocket shovel – and the upgraded Essential Winter Outerwear line with three entirely new designs, refreshed colors and new XXL sizing.



Another battle has been won, another dream come true.
These silent warriors speak louder than words. Where is the next challenge?
When is the next adventure? Who will stop me? - Ph. Mauro Galimberti

Technical Ice



UPDATED '13
CASSIN
X-Dream
3051



CASSIN
X-Dry + Alpine kit
3000K



CASSIN
X-All Mountain
3000S



CASSIN
X-Alp adze
3003



CASSIN
X-Alp hammer
3004

Mountaineering



CAMP
Alpax Special adze
100401



CAMP
Alpax Special hammer
100402



CAMP
Alpina
1430



CAMP
Neve
1427



CAMP
Corsa
1428



CAMP
Corsa Nanotech
1429



CASSIN X-Dream
3051

UPDATED '13 1ST CLASS CC4U

TECHNICAL ICE & MIXED CLIMBING

- Hyperlight, perfectly balanced, fully featured tool for technical dry, mixed and ice climbing
- Ergonomic handle with patented adjustment system to change between Dry and Ice angles
- The handle is constructed from extreme cold resistant polymer laid over the hot-forged aluminum alloy spine
- 3 different picks (Mixed supplied as standard, Ice and Race can be purchased separately) provide further refinement for different styles of climbing
- Micro-adjustable trigger finger ledges and X-Rest insert adjust the overall height and size of the handle
- X-Trigger pommel attaches to the shaft for a third ledge

The X-Dream combines two tools in one – a fully optimized tool for technical ice and an aggressive dry tooling machine. This amazing ice axe not only features three different T rated picks for various terrain, but it also incorporates a patented adjustment system in the ergonomic handle to fine tune the swing and torque even further. A quick turn of the allen bolt above the grip allows the tool to be switched between Dry and Ice positions by changing the angle of the handle in relation to the angle of the pick. In the Dry position, the handle kicks upward for a more down and out pull. The Ice position drops the handle for a more natural swing. Climbers can further refine the X-Dream with micro-adjustable trigger finger ledges (choose from two inserts – the X-Finger Small or the X-Finger Large – that can be flipped over to adjust the position) and the X-Rest insert which adjusts the overall height of the handle. All three picks feature the refined beak and tooth configuration CASSIN tools are known for. They are designed to provide solid sticks with minimal penetration making them the perfect choice for brittle ice and technical mixed terrain. The Ice pick brings the tip 6 mm closer to the handle for performance similar to the popular X-All Mountain tool. It also features a small hammer that adds the perfect amount of head weight for thin and brittle ice. The Race pick features a sharp beak for grappling with rock along with more aggressive teeth both on the underside and topside of the pick. The Mixed pick is a blend between the two with similar angles to the Ice pick but only a small hammer plate and teeth reaching further down the shaft like the Race pick.

CASSIN X-Dream Race Pick
3052



CASSIN X-Dream Mixed Pick
3053



CASSIN X-Dream Ice Pick
3058



CASSIN X-Grip 2
3059



CASSIN X-Trigger
3054



CASSIN X-Finger
3055 Small
3056 Large



CASSIN X-Rest
3057



Ref.	Product Name	Weight		Size	Modular Head	Head Material	CE	CC4U
		g	oz	cm			Shaft	Pick
3051	X-DREAM	590	21.2	50	•	Chromoly Steel	T	T

Technical Ice



NEW '13

CASSIN

Blade Runner
037801



NEW '13

CASSIN

Blade Runner Alpine
037802



CASSIN

Vector Nanotech
126701



CASSIN

CC - Automatic
3014

CASSIN

C14 - Automatic
3015

Mountaineering



CAMP

C12 - Universal
31201



CAMP

Stalker - Universal
40801



CAMP

Tour Nanotech - Universal
0326



CAMP

XLC 490 - Universal
34501



CAMP

C12 - Semi-Automatic
31203



CAMP

Stalker - Semi-Automatic
40802



CAMP

Tour Nanotech - Semi-Automatic
0374



CAMP

XLC 470 - Semi-Automatic
34502



CAMP

C12 - Automatic
31202



CAMP

Magix 10 - Universal
0424



CAMP

Tour Nanotech - Automatic
0367



CAMP

XLC 390 - Automatic
0348



CAMP

XLC Nanotech - Semi-Automatic
180002



CAMP

XLC Nanotech - Automatic
180001



CAMP

Race 290
0318



CAMP

Tour 350 - Automatic
0324



CAMP

6 Point
0631



CAMP

Quattro
1411



CAMP

Ice Master
0173



037801



037802

CASSIN Blade Runner

037801 size 1
037803 size 2

NEW '13 **1st CLASS** **CC4U**

CASSIN Blade Runner Alpine

037802 size 1
037804 size 2

NEW '13 **1st CLASS**

ICE & MIXED CLIMBING, ALPINISM

- The most versatile technical ice crampons on the market
- Patented heel slide design integrates the benefits of vertical and horizontal frame crampon designs
- Interchangeable front points are easy to switch from dual to mono, centered or offset
- Optional snow points optimize the crampons for alpine terrain
- V-shaped chromoly steel front platform offers high rigidity and reduces balling
- The patented heel slide is constructed from proprietary Sandvik Nanoflex® steel for the optimal blend of strength, flex and lightweight
- Asymmetric design follows the contours of modern boots to ensure a more precise fit
- Optional semi-automatic toe bails allow for use on boots without rigid toe lugs
- Anti-balling plates included
- Available in two sizes for optimal boot fit compatibility

The Blade Runner represents a new era in technical ice crampons. A wealth of innovative features combine to create a crampon that conforms to the ergonomics of modern boots, increases rigidity along the entire length of the crampon without decreasing dexterity or compromising fit, adapts to alpine conditions with a variety of front points and toe bail configurations, and naturally reduces balling with its inverted V-shaped front platform. The patented heel slide integrates the linking bar with the heel piece for better torsional rigidity. This allows the Blade Runner to offer the best of both worlds by combining the power and stability of vertical frame crampons with the precision and ease of adjustment of horizontal frame designs. The entire heel slide is constructed from proprietary Sandvik Nanoflex® steel: an amazingly strong and tough stainless steel that allows for a reduction in the thickness of the frame from 2.75 mm to 1.8 mm, thereby reducing weight while simultaneously increasing strength and providing the right amount of longitudinal flexibility for a precise fit on modern boots with more extreme rocker. The front platform is constructed from traditional chromoly steel alloy to absorb impact energy and maintain solid rigidity under foot. The elimination of connection joints leaves little room for play and reduces much of the flex that can make crampons seem less secure on technical terrain. The sophisticated geometry of the front points interact with the secondary points on the main frame for easy penetration and superior hold even in the most fickle conditions. Switching the front points between dual and mono, centered or offset is made easy with the hook and notch system on the rear contact point. The optional snow points convert the Blade Runner into all mountain machines with their beveled design and precise shape and spacing that maximizes purchase in ice and hard snow. Optional semi-automatic toe bails also allow the Blade Runner to be used on boots without rigid toe lugs – a great feature for alpine climbing where the bulky toe lug reduces sensitivity and performance on rock.

CASSIN Antibott

0160 2 pcs



Semi-Automatic

CASSIN Front Bails

0150 2 pcs



CASSIN Front Points

0145 2 pcs



CASSIN Alpine Front Points

0146 2 pcs



Ref.	Product Name	Weight				Size (**)		Points	Frame Material	Antibott	CE	SIA
		g	g (*)	oz	oz (*)	European						
037801	BLADE RUNNER - size 1	1015	910	35.8	31.6	37-46		13/14	Chromoly / Nanoflex®	Included	•	•
037803	BLADE RUNNER - size 2	1030	925	36.3	32.6	40-49		13/14	Chromoly / Nanoflex®	Included	•	•
037802	BLADE RUNNER ALPINE - size 1	1130	1025	39.9	34.6	37-46		14	Chromoly / Nanoflex®	Included	•	•
037804	BLADE RUNNER ALPINE - size 2	1145	1040	40.4	35.1	40-49		14	Chromoly / Nanoflex®	Included	•	•

(*) No antibott - (**) Sizing varies depending on different boots brands and models

Climbing



CASSIN
Laser
4067



CAMP
Air
0517



CASSIN
Laser CR
4068



CAMP
Air CR
0522



CAMP
Stratos
0248



CAMP
Supernova
0380



CAMP
Jasper CR3
1924



CAMP
Jasper CR3 Light
0912



CAMP
Jasper CR4
0337



CAMP
Quartz CR3
0573



CAMP
Flint
0332

Alpinism, Ski Mountaineering



NEW '13
CAMP
Alp Racing
0286



CAMP
Blitz
0104

Groups



CAMP
Harlequin
1925



CAMP
Topaz
1577



CAMP
Topaz Plus
0365



CAMP
Group II
0911

Junior



CAMP
Jasper JR
0344



CAMP
Bambino
0657



CAMP
Baby Adventure
1895



CAMP
Bambino Chest
0900

Full bodies



CAMP
Magic II
0908



CAMP
Easy
0903



CAMP
Figure 8 Chest
0909



CAMP Alp Racing

0286

NEW '13 **LIGHT&FAST** **SKI COMP**

ISMF Pool Member
International Ski Mountaineering Federation

COMPETITIVE SKI MOUNTAINEERING

- 92 grams: lighter than light and still comfortable!
- Innovative webbing construction
- Packs down to the size of a small fist
- Fully tested and certified according to UIAA and CE norms
- Pre-Threaded buckle on the waist
- Reinforced single tie-in point
- One carabiner loop on each side of the waist belt

The Alp Racing is a new innovative, superlight and comfortable harness designed to take the competitive ski mountaineering world by storm. The combination of lighter weight and greater comfort is accomplished using an innovative webbing with structural transparent longitudinal yarns that allow wider cross sections for greater comfort and support without increasing weight. Features a reinforced single tie-in point and a pre-threaded buckle on the waist.

Ref.	Product Name	Weight (M size)		Size	Waist		Legs		No-Twist Belay Loop	Flat Link Leg Straps	Haul Loop	Drop Seat	CE	UIAA
		g	oz		cm	in	cm	in						
0286	ALP RACING	92	3.2	S	68-78	26.8-30.7	51-56	20.1-22					•	•
				M	75-85	29.5-33.5	55-60	21.7-23.6					•	•
				L	82-92	32.3-36.2	59-64	23.2-25.2					•	•
				XL	89-99	35-39	63-65	24.8-25.6					•	•

Campack Winter



NEW '13
CAMP
Skin
0652



UPDATED '13
CAMP
X3 600 Plus
0654



UPDATED '13
CAMP
Rapid Racing
0649



UPDATED '13
CAMP
Rapid
0647



Video: EZ OP



Campack Mountain



CAMP
M5
1929



CAMP
M4
1930



CAMP
M3
1931



CAMP
M3 Light
1995

Campack Climbing



CAMP
Rox
0450



CAMP
Roxback
0384



CAMP
Rox Climb
1932



CAMP
Rocky Carpet
0473

Campack Trail Multisport



CAMP
Trail Vest 10
1589



CAMP
Trail Vest Light
1465



CAMP
Trail Pro
1590



CAMP
Trail Outback 15
0395



CAMP
Trail Outback 5
1542B



CAMP
Trail 1
0123



CAMP
Bottle Holder
1593



CAMP Skin

0652

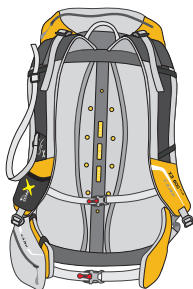
NEW '13 1st CLASS



SKI MOUNTAINEERING, SKI MOUNTAINEERING COMPETITIONS

- Innovative vest construction for light and fast ski mountaineering
- Light, strong and durable fabric
- Xpress Wire ski carrying system with hidden loop
- Zippered side entry crampons pocket is easily accessed without removing pack and can be zipped open from the inside to connect to the main compartment
- Open mesh pockets for skins and essentials
- Mesh zip pockets on the waist for easy access to snacks, maps and essentials
- Right shoulder strap with mesh pocket for gel, left shoulder strap with water bottle holder
- Internal zip pocket for essentials
- Ice axe carriers and external helmet carrying system
- New EZ OP buckles on chest strap and waist belt
- Semi-rigid padded back with ventilation channels
- Hydration compatible
- Available in 2 sizes: S (160-175 cm), L (175-190 cm)

The new Skin (570 grams) builds on the concept of trail vests which have grown in popularity amongst mountain runners for their ability to carry essentials in a streamlined way that makes them feel more balanced than traditional backpacks: the Skin delivers this same kind of precision performance for ski mountaineering. The Xpress Wire ski carrying system allows skis to be attached and removed without removing the pack. A special side-entry pocket near the right hip allows single-handed, fast access to crampons without removing the pack and can be zipped open from the inside to connect to the main compartment. This pocket is also great for water bottles, snacks, clothing, cameras – anything you might want access to while on the move. The Skin also features the new C.A.M.P. exclusive EZ OP buckles on the chest strap and waist belt. The EZ OP buckle features a special pull tab that engages a wire to automatically open the buckle for fast and easy, one-handed operation. Several internal and external pockets, ice axe carriers, an external helmet carrying system and internal pockets for a shovel and probe round out the features on this innovative new conceptualization for top-level ski mountaineering.



1 Grey / Yellow



2 Grey / Red

CAMP X3 600 Plus

0654

UPDATED '13

SKI MOUNTAINEERING, ALPINISM

- New light, strong and durable fabric
- New patterns and colors
- Xpress Wire ski carrying system
- Open mesh pocket for skins
- Detachable hip belt pocket
- Internal zip pocket for essentials
- Hidden ice axe carriers
- New EZ OP buckles on chest strap and waist belt

The perfect pack for longer ski-touring excursions, long-distance ski mountaineering competitions and all-day ski mountaineering expeditions. The improved X3 600 Plus features a new light, strong and durable fabric along with new colors and patterns. The Xpress Wire ski carrying system allows skis to be attached and removed without removing the pack. The hip belt is padded for carrying comfort. Large mesh pockets, a spacious lid and a detachable pocket on the hip belt allow for great organization and fast access to essentials. The interior has fixed pockets specifically designed for a shovel and probe along with hydration bladder attachment points. The X3 600 Plus also features the new C.A.M.P. exclusive EZ OP buckles on the chest strap and waist belt. The EZ OP buckle features a special pull tab that engages a wire to automatically open the buckle for fast and easy, one-handed operation – especially useful with frigid fingers.

Ref.	Product Name	Weight		Volume		X-Press	X-Press	Hydration	Ski Carrying	Ice Axe	Helmet	Shovel	Probe	Internal Pockets	
		g	oz	L	cuin										
0652	SKIN	570	20.11	15	915			•	•	•	•	•	•	•	•
0654	X3 600 Plus	625	22.05	30	1831			•	•	•	•	•	•	•	1



CAMP Rapid Racing 0649

UPDATED '13

SKI COMP

LIGHT&FAST

BEST SELLER



SKI MOUNTAINEERING COMPETITIONS

- Superlight, strong and durable fabric
- 2 ski carrying options for different race formats: Wire Xpress for classic races, Sprint Hook for sprint and relay races
- Extra diagonal ski carrying system for a second pair of skis
- Side entry crampons pocket is easily accessed without removing the pack and can be zipped open from the inside to connect to the main compartment
- Hidden ice axe carrier
- Internal security pocket designed to fit wallet, snacks, maps and other essentials
- Truck Bull tethering system for helping a partner in team races
- Ventilated shoulder straps with pockets for energy gels and small essentials
- New EZ OP buckles on chest strap and waist belt
- Hydration compatible
- Whistle

Upgraded from the famous Rapid 260, the Rapid Racing is the new minimalist's choice for ski mountaineering competitions. The top ski alp racers made the difference through a dedicated round of R&D to get the best combination of features, fit, weight and function for the most aggressive ski mountaineering races. The Rapid Racing uses a special superlight and durable fabric and features two ski carrying systems: the Xpress Wire with binding for classic races, and the Sprint Hook for sprint and relay races. Both systems allow racers to attach and remove skis without removing the pack. The Truck Bull tethering system allows the leader to connect and pull a slower member of the team – a common maneuver in ski mountaineering competitions and adventure racing. In this same spirit, the pack also accommodates a second pair of skis. A Velcro pocket near the right hip allows single-handed, fast access to crampons without removing the pack and can be zipped open from the inside to connect to the main compartment. This pocket is also great for water bottles, snacks, clothing, cameras – anything you might want access to while on the move. The Rapid Racing also features the new C.A.M.P. exclusive EZ OP buckles on the chest strap and waist belt. The EZ OP buckle features a special pull tab that engages a wire to automatically open the buckle for fast and easy, one-handed operation. The interior has fixed pockets specifically designed for a shovel and probe along with hydration bladder attachment points.

Ref.	Product Name	Weight		Volume		X-Press	Sprint Hook	Hydration	Ski Carrying	Ski Carrying	Ski Carrying	Ski Carrying	Ski Carrying	Ski Carrying	Ski Carrying
		g	oz	L	cuin										
0649	RAPID RACING	315	11.11	20	1220										



CAMP Rapid
0647

UPDATED '13 SKI COMP



SKI MOUNTAINEERING, SKI MOUNTAINEERING COMPETITIONS

- New patterns and colors
- New light, strong and durable fabric
- Wire Xpress ski carrying system with extra diagonal ski carrying system for a second pair of skis
- Side entry crampons pocket is easily accessed without removing pack
- Hidden ice axe carrier
- Open mesh pocket for climbing skins
- Truck Bull tethering system for helping a partner in team races
- Ventilated shoulder straps with pockets for energy gels and small essentials
- New EZ OP buckles on chest strap and waist belt
- Hydration compatible

The popular Rapid has been updated using a new hyperlight, high-strength fabric and new colors and patterns. This pack has been rigorously studied to increase speed and facilitate the specific maneuvers common in ski mountaineering competitions. But this 20-liter pack is also an excellent choice for light and fast tours, peak bagging or powder hunting. The Wire Xpress ski carrying system allows skis to be attached and removed without removing the pack. The skier simply slides the tails into the loop at the left hip, flips the tips to the right shoulder and grabs them with the Nylon strap attached to the shoulder strap. The Rapid also features the Truck Bull tethering system for connecting the slower member of a team to the leader – a common maneuver in ski mountaineering competitions and adventure racing. In this same spirit, the pack also accommodates a second pair of skis. A Velcro pocket near the right hip allows single-handed, fast access to crampons without removing the pack. This pocket is also great for water bottles, snacks, clothing, cameras – anything you might want access to while on the move. The Rapid features the new C.A.M.P. exclusive EZ OP buckles on the chest strap and waist belt. The EZ OP buckle features a special pull tab that engages a wire to automatically open the buckle for fast and easy, one-handed operation. The interior has fixed pockets specifically designed for a shovel and probe along with hydration bladder attachment points.

CAMPACK

Ref.	Product Name	Weight		Volume		X-Press							
		g	oz	L	cuin								
0647	RAPID	500	17.64	20	1220								

ED Protection



UPDATED '13

CAMP

ED Protection Jacket
1308



UPDATED '13

CAMP

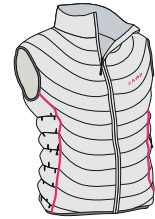
ED Protection Vest
1310



UPDATED '13

CAMP

ED Protection Jacket Lady
1311



UPDATED '13

CAMP

ED Protection Vest Lady
1312



NEW '13

CAMP

ED Protection Jacket Junior
1392

ED Micro EVO



UPDATED '13

CAMP

ED Micro Jacket EVO
1316



UPDATED '13

CAMP

ED Micro Jacket Lady EVO
1320

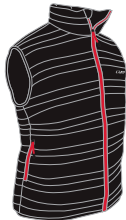
ED Atom



NEW '13

CAMP

ED Atom Jacket
1399



NEW '13

CAMP

ED Atom Vest
1438

Neutrino



NEW '13

CAMP

Neutrino Jacket
1441



NEW '13

CAMP

Neutrino Vest
2102

Dual



NEW '13

CAMP

Chameleon Dual Jacket
1384



CAMP

Dual Slim Jacket
1334

Protection Slim



UPDATED '13

CAMP

Protection Slim Jacket
1313

Essential Winter Outerwear

FIT GUIDE

Body Fit

- Form-fitted cut (snug).
- While originally conceived as an insulated mid-layer, also perfect for an external layer in non-extreme weather.
- Thermal insulation **

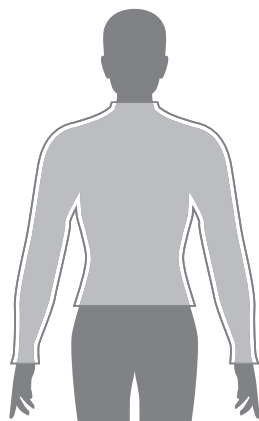
Slim Fit

- Waist-fitted cut.
- Perfect as a mid-layer or an external layer.
- Thermal insulation **

Regular Fit

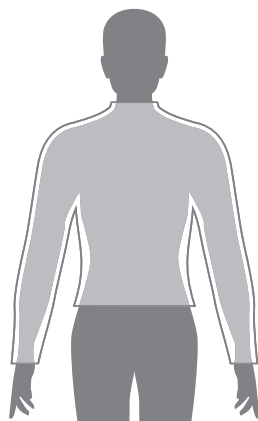
- Classic cut.
- Perfect both as a mid-layer and an exterior layer, very comfortable to wear.
- Thermal insulation **

Body Fit



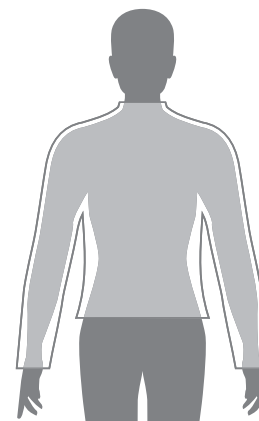
Protection Slim
Dual Slim Jacket

Slim Fit



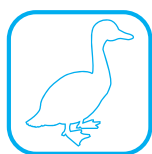
ED Protection
Chameleon Dual Jacket
ED Atom
Neutrino

Regular Fit



ED Micro Evo

THESE GARMENTS ARE MADE OF THE BEST MATERIALS AVAILABLE ON THE MARKET!

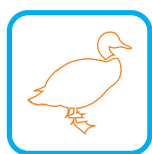


WGD

WGD (White Goose Down): white goose down has the largest and fluffiest clusters which provide the best insulation to weight to volume ratio.

WDD (White Duck Down): duck down clusters are a little smaller than goose down, so it is less fluffy and weighs a little more, but the clusters tend to be more robust and duck down is more affordable to goose.

Filling Power 650 cuin (= cubic inches) is the filling ability of down. Generally, the higher the fill power rating, the better the quality and insulation value of the down.



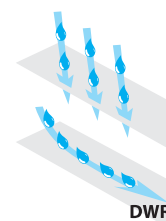
WDD



HITEX

100% Nylon 15D fabric that is lightweight and strong thanks to ripstop construction. A special coating makes the fabric completely down proof while maintaining good air permeability.

DWR (Durable Water Repellent) is a treatment that makes the surface of the fabric water repellent. A water repellent fabric has the power to make water drops roll off without absorbing them.



DWR



ARANEUM

100% Nylon 20D fabric that is down proof in the way it is constructed. It is lightweight and thanks to the lack of any coatings the fabric has exceptional breathability.



1 Dark Red / Glacier Grey



2 Twilight Blue / Lime



3 Parrot Green / Glacier Grey



8 Black / Glacier Grey

CAMP ED Protection Jacket

1308

UPDATED '13 BEST SELLER

ALPINISM, SKI MOUNTAINEERING

- Premium grade white goose down with 650+ fill power
- Hitex (Nylon Ripstop) 15D with DWR (Durable Water Repellent) treatment
- Nylon Taffeta 30D lining
- Full-size hood with visor fits over a helmet
- Full-length zipper with anti-jam system
- Zippered hand warmer pockets
- Zippered outer chest pocket
- 2 large inner pockets and mobile phone pocket
- Stow-Away Pocket
- Elasticized waist
- Lycra® cuffs
- Stretch panels on the sides offer a Slim Fit but can still expanded over layers
- 5 sizes S - XXL, 4 colors (blue, black, green, red)

A best-seller updated with new colors and sizes – now available in XXL for the burly! The ED Protection Jacket is the right choice for protection from the cold and the snow. This 'double shield' comes from the combination of premium grade white goose down insulation and superlight, durable and breathable Hitex (Nylon Ripstop) 15D shell fabric with a DWR (Durable Water Repellent) treatment. The full-size visored hood, inner and outer pockets and a special Stow-Away Pocket (self-contained packing pockets standard on our Essential outerwear) round out the features on this smokin' jacket.

CAMP ED Protection Vest

1310

UPDATED '13

ALPINISM, SKI MOUNTAINEERING

- Premium grade white goose down with 650+ fill power
- Hitex (Nylon Ripstop) 15D with DWR (Durable Water Repellent) treatment
- Nylon Taffeta 30D lining
- Soft fleece neck lining
- Full-length zipper with anti-jam system
- Zippered hand warmer pockets
- Zippered outer chest pocket
- 2 large inner pockets and mobile phone pocket
- Stow-Away Pocket
- Elasticized waist
- Stretch panels on the sides offer a Slim Fit but can still expanded over layers
- 5 sizes S - XXL, 4 colors (blue, black, green, red)

The most technically advanced cold-weather vest in the world updated with new colors and a new XXL size. Wear it over a shell when the temps drop or your momentum and body heat start to wane. Wear it under a shell for alpine ice climbing to keep the core warm and blood flowing without restricting mobility. Protection from the cold and the snow comes from the combination of premium grade white goose down insulation and superlight, durable and breathable Hitex (Nylon Ripstop) 15D with a DWR (Durable Water Repellent) treatment. Inner and outer pockets and a special Stow-Away Pocket (self-contained packing pockets standard on our Essential outerwear) round out the features on this sophisticated vest.



1 Dark Red / Glacier Grey



2 Twilight Blue / Lime



3 Parrot Green / Glacier Grey



8 Black / Glacier Grey

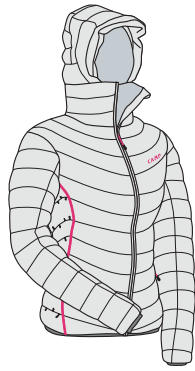
Ref.	Product Name	Weight			Size	Exterior Fabrics	Insulation			Hood	Wearability
		size	g	oz			Type	Filling Power (cuin)	g/mq		
1308	ED Protection Jacket	L	450	15.9	S-M-L-XL-XXL	Hitex	90/10 White Goose Down	650	160 g	Technical	Slim Fit
1310	ED Protection Vest	M	280	9.9	S-M-L-XL-XXL	Hitex	90/10 White Goose Down	650	110 g	-	Slim Fit



1 Dark Red / Glacier Grey



2 Twilight Blue / Glacier Grey



7 Snow / Glacier Grey



8 Black / Glacier Grey

CAMP ED Protection Jacket Lady
1311

UPDATED '13 LADY

ALPINISM, SKI MOUNTAINEERING

- Premium grade white duck down with 650+ fill power
- Hitex (Nylon Ripstop) 15D with DWR (Durable Water Repellent) treatment
- Nylon Taffeta 30D lining
- Full-size hood with visor fits over a helmet
- Full-length zipper with anti-jam system
- Zippered hand warmer pockets
- 2 large inner pockets and mobile phone pocket
- Stow-Away Pocket
- Elasticized waist
- Lycra® cuffs
- Stretch panels on the sides offer a Slim Fit but can still expanded over layers
- 4 sizes XS - L, 4 colors (blue, black, white, red)

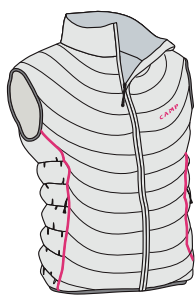
That's right ladies: stay warm and dry even in wet conditions. The ED Protection Jacket Lady is the right choice for protection from the cold and the snow. This 'double shield' comes from the combination of premium grade white duck down insulation and superlight, durable and breathable Hitex (Nylon Ripstop) 15D shell fabric with a DWR (Durable Water Repellent) treatment. The full-size visored hood, inner and outer pockets and a special Stow-Away Pocket (self-contained packing pockets standard on our Essential outerwear) round out the features on this smokin' jacket.



1 Dark Red / Glacier Grey



2 Twilight Blue / Glacier Grey



7 Snow / Glacier Grey



8 Black / Glacier Grey

CAMP ED Protection Vest Lady
1312

UPDATED '13 LADY

ALPINISM, SKI MOUNTAINEERING

- Premium grade white duck down with 650+ fill power
- Hitex (Nylon Ripstop) 15D with DWR (Durable Water Repellent) treatment
- Nylon Taffeta 30D lining
- Soft fleece neck lining
- Full-length zipper with anti-jam system
- Zippered hand warmer pockets
- 2 large inner pockets and mobile phone pocket
- Stow-Away Pocket
- Elasticized waist
- Stretch panels on the sides offer a Slim Fit but can still expanded over layers
- 4 sizes XS - L, 4 colors (blue, black, white and red)

The ED Protection Vest Lady is available in women's specific cuts and colors (red is the bright new arrival). Wear it over a shell when the temps drop or your momentum and body heat start to wane. Wear it under a shell for alpine ice climbing to keep the core warm and blood flowing without restricting mobility. Protection from the cold and from the snow comes from the combination of premium grade white duck down insulation and superlight, durable and breathable Hitex (Nylon Ripstop) 15D with a DWR (Durable Water Repellent) treatment. Inner and outer pockets and a special Stow-Away Pocket (self-contained packing pockets standard on our Essential outerwear) round out the features on this sophisticated vest.

Ref.	Product Name	Weight			Size	Exterior Fabrics	Insulation			Hood	Wearability
		size	g	oz			Type	Filling Power (cuin)	g g/mq		
1311	ED Protection Jacket Lady	S	355	12.5	XS-S-M-L	Hitex	90/10 White Duck Down	650	150 g	Technical	Slim Fit
1312	ED Protection Vest Lady	XS	210	7.4	XS-S-M-L	Hitex	90/10 White Duck Down	650	80 g	-	Slim Fit



1 Dark Red / Orange



2 Twilight Blue / Orange



3 Parrot Green / Orange



8 Black / Orange

CAMP ED Protection Jacket Junior

1392

NEW '13 JUNIOR

WINTER HIKING, LIFESTYLE

- Specifically designed for kids
- Premium grade white goose down with 650+ fill power
- Hitex (Nylon Ripstop) 15D with DWR (Durable Water Repellent) treatment
- Durable Araneum 20D lining
- Full-size hood with visor
- Full-length zipper with anti-jam system
- Zippered hand warmer pockets
- Zippered outer chest pocket
- 2 large inner pockets and small pocket for essentials
- Stow-Away Pocket
- Elasticized waist
- Lycra® cuffs
- Stretch panels on the sides offer a Slim Fit but can still expanded over layers
- 3 sizes for children 6 - 12 years old, 4 colors (blue, black, green, red)

The ED Protection Jacket Junior offers the same features as the ED Protection Jacket for exciting winter adventures and daily outdoor activities which we all know can be the hardest on kids gear! Available in 3 sizes (6-8 years, 8-10 years, 10-12 years) and 4 colors (blue, black, green, red) with an orange lining constructed from durable Araneum (Nylon Ripstop) fabric. Protection from the cold and the snow comes from the combination of premium grade white goose down insulation and superlight, durable and breathable Hitex (Nylon Ripstop) 15D with a DWR (Durable Water Repellent) treatment. The full-size visored hood, inner and outer pockets and a special Stow-Away Pocket (self-contained packing pockets standard on our Essential outerwear) round out the features on this technical and durable jacket.



1 Dark Red / Glacier Grey



2 Twilight Blue / Glacier Grey



3 Parrot Green / Glacier Grey



4 Black / Glacier Grey

CAMP Chameleon Dual Jacket

1384

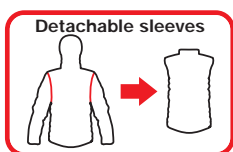
NEW '13 1ST CLASS



ALPINISM, SKI MOUNTAINEERING

- Versatile technical jacket with detachable sleeves
- Combines premium grade white goose down with 650+ fill power with Primaloft® synthetic insulation
- Hitex (Nylon Ripstop) 15D with DWR (Durable Water Repellent) treatment
- Nylon Taffeta 30D lining
- Hidden hood fits over a helmet
- Full-length 2-way main zipper with anti-jam system
- Zippered hand warmer pockets
- Outer chest pocket with vertical zipper
- 2 large inner pockets and mobile phone pocket
- Stow-Away Pocket
- Elasticized waist
- Lycra® cuffs
- Body Fit
- 5 sizes S - XXL, 4 colors (blue, black, green, red)

The name says it all: the new Chameleon Dual is a versatile technical garment designed to adapt for every kind of mountain athlete. Thanks to detachable sleeves, you get two products in one for the best comfort and performance independent of the specific activity or conditions. Ski mountaineers will zip off the sleeves for climbing and reattach them for the cold descent. Climbers will find special use for the detachable sleeves as they climb through sections of sun and shade, wind and shelter or switch from the sharp end to belay slave. The Chameleon Dual Jacket combines premium grade white goose down with Primaloft® synthetic fills in a way that maximizes each material's specific attributes. Down is used on the front and back panels, shoulders, and outer sleeves to ensure the best thermal insulation for the core. Primaloft® is used on the side panels and inner sleeves. Hidden hood for the best durability and comfort over time, inner and outer pockets and a special Stow-Away Pocket (self-contained packing pockets standard on our Essential outerwear) round out the features on this incredibly high-end jacket ... vest ... which one is it?!



Ref.	Product Name	Weight			Size	Exterior Fabrics	Insulation			Hood	Wearability		
		size	g	oz			Type	Filling Power (cuin)	g g/mq				
1392	ED Protection Jacket Junior	8/10	285	10.1	yrs 6/8 cm (116/128)	8/10 (128/140)	10/12 (140/152)	Hitex	90/10 White Goose Down	650	80 g	Technical	Slim Fit
1384	Chameleon Dual Jacket	M	450	15.9	S-M-L-XL-XXL			Hitex	90/10 White Goose Down + Primaloft®	650	110 g 60 g/mq	Foldable	Slim Fit



1 Red

2 Brilliant Blue



4 Orange

8 Black

CAMP ED Atom Jacket

1399

NEW '13 LIGHT&FAST

ALPINISM, SKI MOUNTAINEERING, LIFESTYLE

- Hyperlight and compact, filled with premium grade white goose down with 650+ fill power
- Proprietary Araneum 20D fabric is uncoated, yet windproof
- Araneum 20D lining
- Full-size hood
- Full-length 2-way main zipper with anti-jam system
- Zippered hand warmer pockets
- 2 inner pockets
- Stow-Away Pocket
- Adjustable elastic cord seals the bottom hem from drafts
- Lycra® cuffs
- Slim Fit
- 6 sizes XS - XXL, 4 colors (black, blue, orange, red)

The new hyperlight ED Atom is a pinnacle piece for cold weather activities. Proprietary Araneum fabric (a 20D Nylon Ripstop fabric) is employed for both the shell and the lining making it super packable, durable and lightweight all at the same time. Araneum is a spectacular insulating shell material because it is windproof without the use of any coatings. This means the fabric has a natural tendency for trapping heat, yet it remains one of the most packable materials on the market. The full size hood, inner and outer pockets and a special Stow-Away Pocket (self-contained packing pockets standard on our Essential outerwear) round out the features on this technical, sporty and stylish jacket.

CAMP ED Atom Vest

1438

NEW '13 LIGHT&FAST

ALPINISM, SKI MOUNTAINEERING, LIFESTYLE



1 Red

2 Brilliant Blue



4 Orange

8 Black

- Hyperlight and compact, filled with premium grade white goose down with 650+ fill power
- Proprietary Araneum 20D fabric is uncoated, yet windproof
- Araneum 20D lining
- Full-length 2-way main zipper with anti-jam system
- Zippered hand warmer pockets
- 2 inner pockets
- Stow-Away Pocket
- Elasticized waist
- Slim Fit
- 6 sizes XS - XXL, 4 colors (black, blue, orange, red)

The new ED Atom Vest is an amazingly light, compact and breathable layer designed to be worn both in the mountains (it is ideal for late season ski mountaineering and fair weather ice climbing) and in the cities thanks to its technical and catchy design. The ED Atom Vest combines our proprietary Araneum fabric (a 20D Nylon Ripstop fabric) with high quality down for truly remarkable results. Araneum is a spectacular insulating shell material because it is windproof without the use of any coatings. This means the fabric has a natural tendency for trapping heat, yet it remains one of the most packable materials on the market. The full-length 2-way main zipper, inner and outer pockets and a special Stow-Away Pocket (self-contained packing pockets standard on our Essential outerwear) round out the features on this technical, sporty and stylish vest.

Ref.	Product Name	Weight			Size	Exterior Fabrics	Insulation			Hood	Wearability
		size	g	oz			Type	Filling Power (cuin)	g g/mq		
1399	ED Atom Jacket	M	325	11.5	XS-S-M-L-XL-XXL	Araneum	90/10 White Goose Down	650	100 g	Classic	Slim Fit
1438	ED Atom Vest	M	220	7.8	XS-S-M-L-XL-XXL	Araneum	90/10 White Goose Down	650	60 g	-	Slim Fit



1 Red

2 Brilliant Blue



4 Orange

8 Black

CAMP Neutrino Jacket

1441

NEW '13 LIGHT&FAST



ALPINISM, SKI MOUNTAINEERING, LIFESTYLE

- Hyperlight and compact, filled with Primaloft® synthetic insulation that works in wet conditions
- Proprietary Araneum 20D fabric is uncoated, yet windproof
- Araneum 20D lining
- Full-size hood
- Full-length 2-way main zipper with anti-jam system
- Zippered hand warmer pockets
- Inner chest pocket
- Stow-Away Pocket
- Adjustable elastic cord seals the bottom hem from drafts
- Lycra® cuffs
- Slim Fit
- 6 sizes XS - XXL, 4 colors (black, blue, orange, red)

The Neutrino Jacket is remarkable for its combination of durable 20D nylon shell material (our proprietary Araneum) and Primaloft® synthetic fill, while maintaining that critical property of superb packability that Essential garments from CAMP are known for. Araneum is a spectacular insulating shell material because it is windproof without the use of any coatings. This means the fabric has a natural tendency for trapping heat, yet it remains one of the most packable materials on the market. Compare the Neutrino conceptually to the traditional 'softshell' design, but add insulation that works even when it's wet and better protection from the wind. The full-size hood, full-length 2-way main zipper, inner and outer pockets and a special Stow-Away Pocket (self-contained packing pockets standard on our Essential outerwear) round out the features on this advanced shell/layering piece.



1 Red

2 Brilliant Blue



4 Orange

8 Black

CAMP Neutrino Vest

2102

NEW '13 LIGHT&FAST



ALPINISM, SKI MOUNTAINEERING, LIFESTYLE

- Hyperlight and compact, filled with Primaloft® synthetic insulation that works in wet conditions
- Proprietary Araneum 20D fabric is uncoated, yet windproof
- Araneum 20D lining
- Full-length 2-way main zipper with anti-jam system
- Zippered hand warmer pockets
- Inner chest pocket
- Stow-Away Pocket
- Adjustable elastic cord seals the bottom hem from drafts
- Slim Fit
- 6 sizes XS - XXL, 4 colors (black, blue, orange, red)

The Neutrino Vest is conceptually similar to a traditional 'softshell' design, but boasts a layer of insulation that works even when it's wet and offers better protection from the wind by combining our proprietary Araneum fabric (a 20D Nylon Ripstop fabric) with Primaloft® synthetic fill. Araneum is a spectacular insulating shell material because it is windproof without the use of any coatings. This means the fabric has a natural tendency for trapping heat, yet it remains one of the most packable materials on the market. The full-length 2-way main zipper, inner and outer pockets and a special Stow-Away Pocket (self-contained packing pockets standard on our Essential outerwear) round out the features on this active layering piece.

Ref.	Product Name	Weight			Size	Exterior Fabrics	Insulation			Hood	Wearability
		size	g	oz			Type	Filling Power (cuin)	g g/mq		
1441	Neutrino Jacket	M	290	10.2	XS-S-M-L-XL-XXL	Araneum	Primaloft®	-	60 g/mq	Classic	Slim Fit
2102	Neutrino Vest	M	170	6.0	XS-S-M-L-XL-XXL	Araneum	Primaloft®	-	60 g/mq	-	Slim Fit

CAMP ED Micro Jacket EVO

1316

UPDATED '13

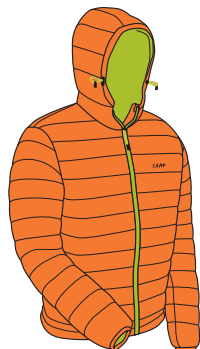
ALPINISM, SKI MOUNTAINEERING, LIFESTYLE



1 Red / Glacier Grey



2 Brilliant Blue / Lime



3 Orange / Lime



8 Black / Glacier Grey

- Light and compact, filled with premium grade white goose down with 650+ fill power
- Proprietary Araneum 20D fabric is uncoated, yet windproof
- Nylon Taffeta 30D lining
- Full-size hood
- Full-length zipper with anti-jam system
- Zippered hand warmer pockets
- Inner chest pocket
- Stow-Away Pocket
- Adjustable elastic cord seals the bottom hem from drafts
- Lycra® cuffs
- Regular Fit
- 5 sizes S - XXL, 4 colors (blue, black, orange, red)

The right choice for warmth versus weight. The light and compact ED Micro Jacket combines our proprietary Araneum fabric (20D Nylon Ripstop) with high quality down and a formed fit for truly remarkable results. Araneum is a spectacular insulating shell material because it is windproof without the use of any coatings. This means the fabric has a natural tendency for trapping heat, yet it remains one of the most packable materials on the market. If you are looking for a true all-rounder proven to provide more warmth than one would expect from the weight, look no further than the ED Micro Jacket.

CAMP ED Micro Jacket Lady EVO

1320

UPDATED '13

LADY

ALPINISM, SKI MOUNTAINEERING, LIFESTYLE



1 Red / Glacier Grey



2 Brilliant Blue / Glacier Grey



4 Orange / Glacier Grey



8 Black / Glacier Grey

- Light and compact, filled with premium grade white goose down with 650+ fill power
- Proprietary Araneum 20D fabric is uncoated, yet windproof
- Nylon Taffeta 30D lining
- Full-size hood
- Full-length zipper with anti-jam system
- Zippered hand warmer pockets
- Inner chest pocket
- Stow-Away Pocket
- Adjustable elastic cord seals the bottom hem from drafts
- Lycra® cuffs
- Regular Fit
- 4 sizes XS - L, 4 colors (blue, black, orange, red)

Where women tend to run colder, the ED Micro Jacket reigns supreme by delivering unexpected amounts of warmth for the weight. It combines our proprietary Araneum fabric (20D Nylon Ripstop) with high quality down and a formed fit for truly remarkable results. Araneum is a spectacular insulating shell material because it is windproof without the use of any coatings. This means the fabric has a natural tendency for trapping heat, yet it remains one of the most packable materials on the market. If you are looking for a true all-rounder proven to provide more warmth than one would expect from the weight, look no further than the ED Micro Jacket Lady.

Ref.	Product Name	Weight			Size	Exterior Fabrics	Insulation			Hood	Wearability
		size	g	oz			Type	Filling Power (cuin)	g g/mq		
1316	ED Micro Jacket EVO	L	390	13.8	S-M-L-XL-XXL	Araneum	90/10 White Goose Down	650	120 g	Classic	Regular Fit
1320	ED Micro Jacket Lady EVO	XS	315	11.1	XS-S-M-L	Araneum	90/10 White Goose Down	650	120 g	Classic	Regular Fit



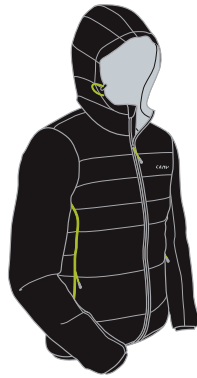
1 Dark Red / Glacier Grey



2 Twilight Blue / Glacier Grey



7 Snow / Glacier Grey



8 Black / Glacier Grey

CAMP Protection Slim Jacket
1313

UPDATED '13



ALPINISM, SKI MOUNTAINEERING

- Light and compact jacket filled with Primaloft® synthetic insulation for wet conditions
- Hitex (Nylon Ripstop) 15D with DWR (Durable Water Repellent) treatment
- Nylon Taffeta 30D lining
- Full-size hood
- Full-length zipper with anti-jam system
- Zippered hand warmer pockets
- 2 inner pockets
- Stow-Away Pocket
- Adjustable elastic cord seals the bottom hem from drafts
- Lycra® cuffs
- Body Fit
- 5 sizes XS - XL, 4 colors (black, blue, white, red)

The Protection Slim Jacket combines Primaloft® synthetic insulation (proven to offer reliable insulation even when wet) with superlight, durable and breathable Hitex (Nylon Ripstop) 15D with a DWR (Durable Water Repellent) treatment for true cold, wet weather protection! The full-size hood, inner and outer pockets and a special Stow-Away Pocket (self-contained packing pockets standard on our Essential outerwear) round out the features on this trim rig.

CAMP Dual Slim Jacket
1334



ALPINISM, SKI MOUNTAINEERING



2 Brilliant Blue / Lime



8 Black / Glacier Grey

- Proprietary Araneum fabric is uncoated, yet windproof and water resistant
- Combines premium grade white goose down with 650+ fill power with Primaloft® synthetic insulation
- Stretch panels on the sides offer a slim fit
- Full length zipper with anti-jam system
- Zippered hand warmer pockets and inside chest pocket
- Adjustable elastic cords seal the bottom hem from drafts
- Lycra cuffs

The Dual Slim Jacket combines a profiled fit with the brilliant combination of White Goose Down and Primaloft® synthetic fill to create a truly advanced insulating layer. Baffled high quality down is used on the front and back panels as well as the upper sleeves and Primaloft® is used for the side panels, shoulders and lower sleeves. The shell fabric is Araneum, a 20 denier nylon Ripstop fabric that is strong, light and extremely packable. Araneum is a spectacular insulating shell material because it is windproof and water resistant without the use of any coatings. This means the fabric has a natural tendency for trapping heat, yet it remains one of the most packable materials on the market.

Ref.	Product Name	Weight			Size	Exterior Fabrics	Insulation			Hood	Wearability
		size	g	oz			Type	Filling Power (cuin)	g g/mq		
1313	Protection Slim Jacket	L	380	13.4	XS-S-M-L-XL	Hitex	Primaloft®	-	60 g/mq *40 g/mq	Classic	Body Fit
1334	Dual Slim Jacket	M	310	10.9	XS-S-M-L-XL	Araneum	90/10 White Goose Down + Primaloft®	650 -	100 g 60 g/mq	-	Body Fit

(*) 40 g/mq = undersleeve-side



M. Giglio climbs the steep couloir to the top of Rutor Peak during the Tour du Rutor Extreme ski mountaineering competition, Italy - Ph. Marco Spataro

Gloves



UPDATED '13

CAMP
GeKO Light
2094



UPDATED '13

CAMP
GeKO Hot
2095



NEW '13

CAMP
G Comp Wind Power
2096



CAMP
G Comp Wind
2080



CAMP
G Tech Dry
2081



CAMP
G Hot Dry
2082



CAMP
G Hot Dry Lady
1882



CAMP
G Shell+Lite
2083



CAMP
G Lite Wind
2085



CAMP
G Lite
2084



CAMP
G Swing
2086



CAMP
Hotmit'N
2087



CAMP
Drymit'N
2088



CAMP
Windmit'N
2089

Hats



CAMP
Hat
2090



CAMP
Headband
2091



1 Black



Grey / Orange

CAMP GeKO Light*
2094

UPDATED '13

ALPINISM, ICE CLIMBING

- Precision fit for maximum grip and dexterity
- Soft and supple etched goatskin leather palms are grippy and durable
- Thin padding on the main body, no insulation on the palms
- Now also available in black

Based on the same cuts and sleek designs of our popular ski mountaineering gloves, the GeKO Light gets even more trim and precise to fit the unique demands of advanced alpinism and ice climbing. The palms are not insulated for maximum grip and dexterity. Thin padding on the main body combines with box construction using durable polyester fabric for a precise and snug fit without restricting dexterity. Digitally etched leather main palms are reinforced at wear points for maximum durability over time. Available in 5 sizes from S to XXL.



1 Black



Grey / Green

CAMP GeKO Hot***
2095

UPDATED '13

MOUNTAINEERING, ALPINISM



- The perfect combination of performance, warmth and dexterity
- Soft and supple etched goatskin leather palms are grippy and durable
- Primaloft® insulation on the main body and on the palm
- Now also available in black

Insulated gloves designed for advanced mountaineering and alpinism. Primaloft® insulation on the palm and on the main body for the optimal combination of performance and warmth. Box construction using Durastretch® fabrics allows for a precise and tight fit without restricting dexterity. Digitally etched leather main palms are reinforced at wear points for maximum durability over time. Available in 5 sizes from S to XXL.

Ref.	Product Name	Weight / pair			Size								
		Size	g	oz									
2094	GeKO LIGHT	M	109	3.7	S-M-L-XL-XXL	1	•				•		•
2095	GeKO HOT	M	140	4.9	S-M-L-XL-XXL	3	•				•		•



CAMP G Comp Wind Power*
2096



NEW '13 **LIGHT&FAST** **1st CLASS** **SKI COMP**

SKI MOUNTAINEERING COMPETITION, SKI MOUNTAINEERING, RUNNING, CYCLING

- Windmit'N shell hides in a pocket on the wrist to be pulled out for protection from the wind and provides extra warmth
- Premium goatskin leather palm for maximum dexterity, grip and durability
- Grip'R pads on thumb, index finger and palm
- Reinforcement patches protect against abrasion from pole straps
- Terry wipe on thumb

The popular G Comp Wind has become a benchmark for light and fast ski mountaineering over the last several years. The new Power version updates the palm material with premium goatskin leather for even better dexterity, grip and durability. This improvement gives the G Comp Wind more cross-over utility for cold-weather aerobic activities like biking or Nordic skiing. The synthetic insulating glove is light and breathable for intense aerobic activity. For pre-dawn starts and above tree line ridges when the fingers need a bit more protection simply pull out the hidden wind mitts. The Windmit'N covers the fingers and thumb while leaving the palm exposed for good grip. When things start to feel balmy again, simply tuck the wind mitts back into the self-contained wrist pockets. Available in 5 sizes from S to XXL.

NOTE. Help ensure the longevity of the Windmit'N by always removing it when working with bindings and skins.

Ref.	Product Name	Weight / pair			Size								
		Size	g	oz									
2096	G Comp Wind Power	XL	112	4.0	S-M-L-XL-XXL	1	•		•		•	•	•



M. Giglio and A. Cazzanelli roped up on the top of the West Breithorn, Italy - Ph. Marco Spataro

Snow Shoes



CAMP
Snow Cube
0951



CAMP
Snow Cube Light
0953



CAMP
Snow Shoes
0959/0956

Ski Mountaineering



NEW '13
CAMP
Rocket
0163



CAMP
Crest
1894



CAMP
Crest Touring
1728



CAMP
ALU Tele
0156



CAMP
ALU Fix
0153

Mix



CAMP
Carbon Fiber
Avalanche Probe
1281



CAMP
Light Aluminum
Avalanche Probe
1009



CAMP
70% Mohair Blend



CAMP
Competition



CAMP
Contest
1519



CAMP Rocket
0163

NEW '13 **1ST CLASS**

SKI MOUNTAINEERING, ALPINISM, SNOW HIKING, RESCUE

- Innovative aluminum alloy blade with an aggressive toothed design and large size that ensure outstanding performance
- Telescoping aluminum alloy shaft features an ergonomic bend to facilitate snow cutting
- Ergonomic handle and great packability

To save a life, a shovel needs to operate with speed and precision. The new Rocket facilitates this in a truly scientific way. The sturdy blade and shaft have been carefully studied to ensure optimal performance. The blade shape and size (oversized at 24 x 28 cm) integrate with the shaped shaft and formed handle for the best shoveling ergonomics allowing rescuers to move more snow in less time. 6061 T6 aluminum alloy is a rigid, yet resistant material optimized for chopping along with teeth for cutting in really hard snow and small teeth on the upper part of the blade to facilitate secure boot-to-blade contact for heavier digging. The ergonomics of the shaft also allow the shovel to be compacted to a smaller volume than other shovels. The Rocket is a true stroke of genius born from the intense study of what makes a shovel really work in the backcountry and the results are unparalleled.



Ref.	Product Name	Weight		Blade Dimensions		Shaft Length		Blade material
		g	oz	cm	in	cm	in	
0163	ROCKET	660	23.3	24x28	9.4x11	47-65	18.5-25.6	Aluminium

C.A.M.P. Testimonial & Partner



Cristian Brenna (Ita)



Dennis Brunod (Ita)



Mauro Calibani (Ita)



Evgeny Krivosheitsev (Ukr)



Simone Moro (Ita)



Rob Pizem (Usa)



Manfred Reichegger (Ita)



Martin Riegler (Ita)



Denis Urubko (Kaz)



Maja Vidmar (Slo)

WARNING!

Climbing, caving, via ferrata and other "vertical" sports for which CAMP and CASSIN products can be used are potentially dangerous. If you use our equipment, you are responsible for learning the proper use of the equipment and proper climbing techniques, and accept all risk inherent in these activities.

The weights indicated in this workbook may be subject to change due to manufacturing tolerance limits, to the integral nature of raw materials used, and to climate and storage conditions. Products made of textile and plastic materials are more subject to weight variations.

Technical specifications may change without notice.

Cover photo: High-altitude mountain guide Fabrizio Zangrilli hucking laps on late season ice in Rocky Mountain National Park, Colorado, USA.
Ph. Dan Gambino

We cooperate with:

CLIMBING-MOUNTAINEERING

Angelloz Didier (Fra)	Libera Rossano (Ita)
Baù Alessandro (Ita)	Lichter Justin (Usa)
Bonfanti Elio (Ita)	Marlier Ezio (Ita)
Borgnet Yann (Fra)	Maureau Stéphanie (Fra)
Buil Cecilia (Spa)	Mercier Jeff (Fra)
Caserini Elisabetta (Ita)	Morandi Sara (Ita)
Cesa Christian (Ita)	Nicolini Franco (Ita)
Claassen Paige (Usa)	Oprandi Omar (Ita)
Clavel Arnaud (Ita)	Osteyee Ian (Usa)
De Grandi Stefania (Ita)	Passini Luca (Ita)
Frigerio Martina (Ita)	Pozzoli Giovanna (Ita)
Ghisolfi Stefano (Ita)	Ravanel Marc (Fra)
Giglio Matteo (Ita)	Ravier Cristian (Fra)
Gnerro Alberto (Ita)	Sarkany Muriel (Bel)
Gross Josh (Usa)	Sirtori Diego (Ita)
Herrington Blake (Usa)	Tardivel Pierre (Fra)
Herry Julien (Fra)	Vennon Jen (Usa)
Janin Rudi (Ita)	Zampa Giada (Ita)
Kazbekova Jenia (Ukr)	Zangrilli Fabrizio (Usa)
Lella Donato (Ita)	

SKI MOUNTAINEERING

Antonioli Robert (Ita)	Nicolini Federico (Ita)
Beccari Filippo (Ita)	Pedrini Daniele (Ita)
Boscacci Michele (Ita)	Pellissier Gloriana (Ita)
Cazzanelli Alessandra (Ita)	Richard Mireille (Swi)
Clos Corinne (Ita)	Sbalbi Tony (Fra)
Follador Alessandro (Ita)	Sci Club Alta Valtellina (Ita)
Holzknacht Lorenzo (Ita)	Seletto Alain (Ita)
Kuhar Nejc (Slo)	Senk Anze (Slo)
Lanfranchi Pietro (Ita)	Valmassoi Martina (Ita)
Lenzi Damiano (Ita)	Wickenhauser Bryan (Usa)
Nicolini Elena (Ita)	Zulian Ivo (Ita)

GROUPS

- American Alpine Club
- American Mountain Guides Association
- Access Fund (Usa)
- F.A.S.I. Federazione Arrampicata Sportiva Italiana
- Guide alpine Cortina (Ita)



Photo credits: Dan Gambino, Mauro Galimberti, Marco Spataro, Pablo Garcia, Francesco Tremolada

Products photo: Mario Spreafico

Graphic project: PrePrint - Lecco

Printing: Printed in Italy, January 2013



GreenPrinting®
A.C.BELLAVITE srl, Missaglia (Lc)

C.A.M.P. prints their catalogues using the GreenPrinting® philosophy to protect the environment through the use of green materials and renewable energy.



Cecilia Buil on *Lipton Ice*, Rjukan, Norway - Ph. Pablo Garcia



CAMP

are brands of the **CAMP** GROUP

CAMP SPA

CONCEZIONE ARTICOLI MONTAGNA PREMANA

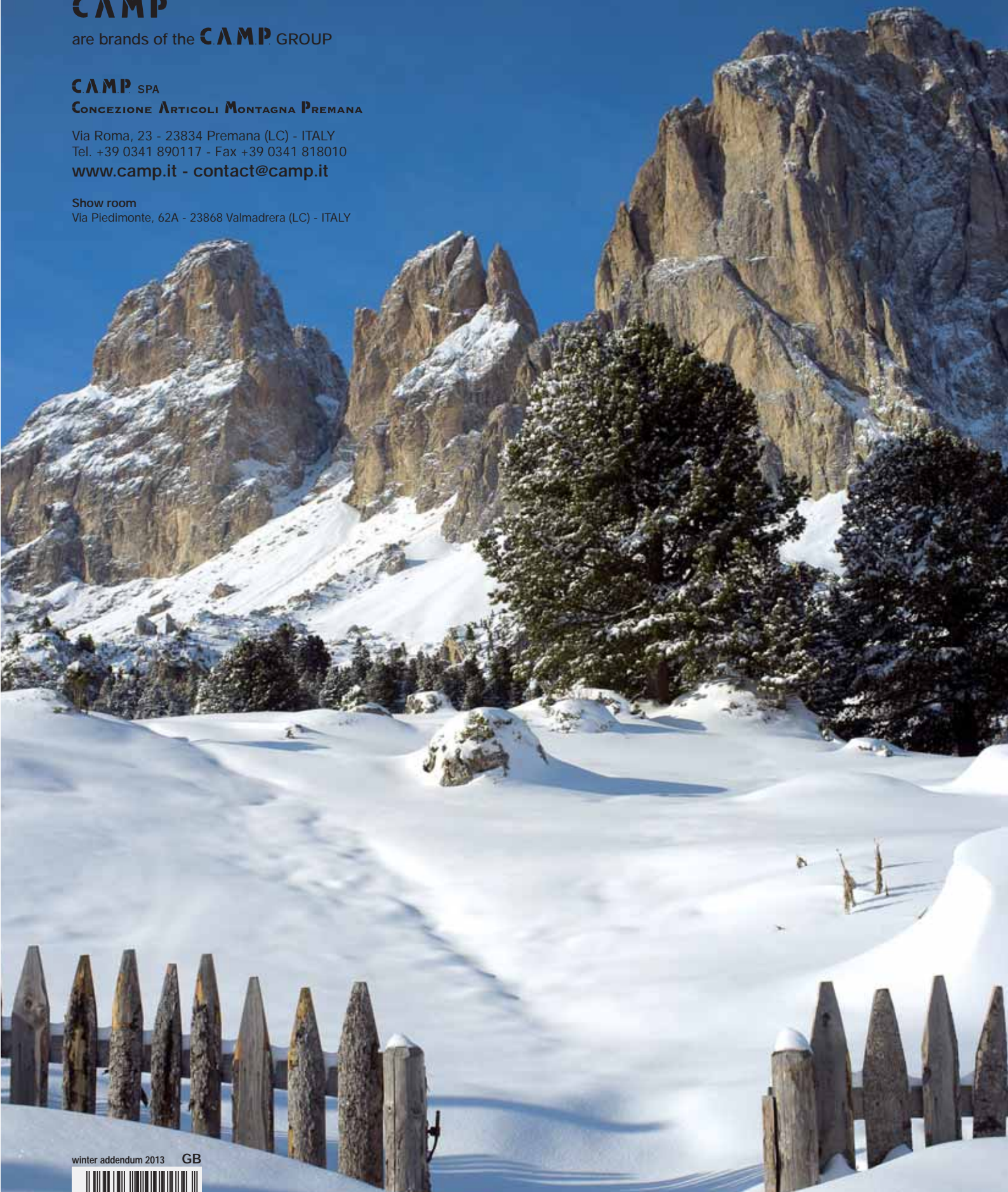
Via Roma, 23 - 23834 Premana (LC) - ITALY

Tel. +39 0341 890117 - Fax +39 0341 818010

www.camp.it - contact@camp.it

Show room

Via Piedimonte, 62A - 23868 Valmadrera (LC) - ITALY



winter addendum 2013 GB



A prime view of the Sassolungo group, Dolomites, Italy - Ph. Francesco Tremolada